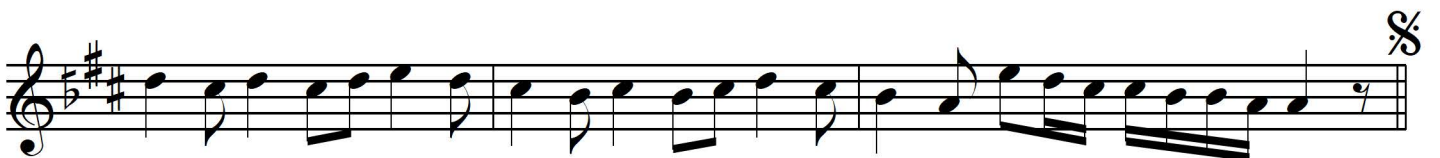


Aksak Semâî ♩ = 112

İsmail Ağa (Tanbûri)
(? - 1880)

- Son -



Hicâzaşîrân (Rahatfezâ) Saz Semâî

- 2 -

İsmail Ağa (Tanbûri)
(? - 1880)

3.
Hâne



Curcuna

4.
Hâne

