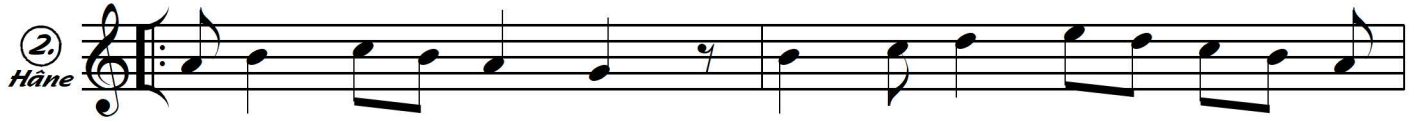
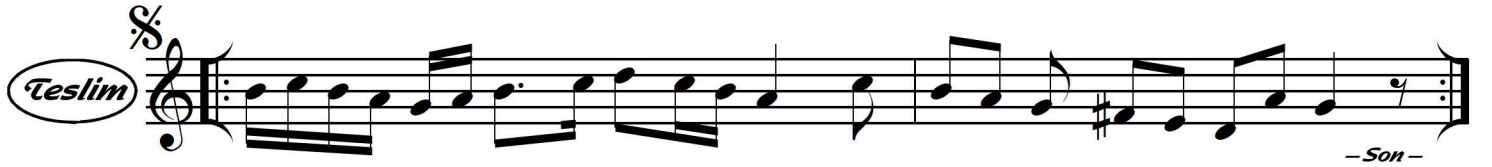


Aksak Semâî ♩ = 112

Bülbüloğlu



Not: Muallim İsmâil Hakkı Bey'in yazdığı kaynak eserin tıpkıbasımı aşağıdadır.

صاحبی ییل اوغلی
مذھبی سوزلا

Handwritten musical score for the piece "Mazhabi Sوزla" by "Sahabi Yil Oglu". The score is written on ten staves. The first staff is a vocal line in G major (one sharp) and 5/8 time. The following staves are for a string ensemble, with the first four strings (Violin I, Violin II, Viola, and Cello) indicated by "1", "2", "3", and "4" respectively. The music features a mix of eighth and sixteenth notes, with some triplet markings. The piece concludes with a final cadence on the tenth staff.