

Sultânî-Yegâh Saz Eseri

(Usûl fihristli)

- 1 -

Ferit Sidal (Tanbûr)
(01.03.1925 - 09.08.2001)

Nim Sofyân ♩ = 80

1. Hâne

Aksak Semâi ♩ = 120

Teslim

35

- Son -

Semâi ♩ = 156

2. Hâne

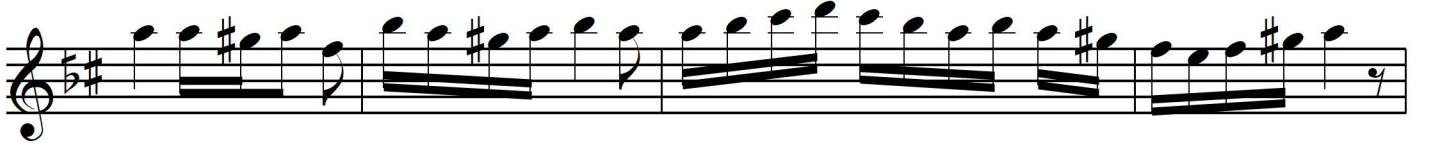
Sultânî-Yegâh Saz Eseri

(Usûl fihristli)

- 2 -

Ferit Sidal (Tanbür)
(01.03.1925 - 09.08.2001)

Türk Aksağı ♩ = 140



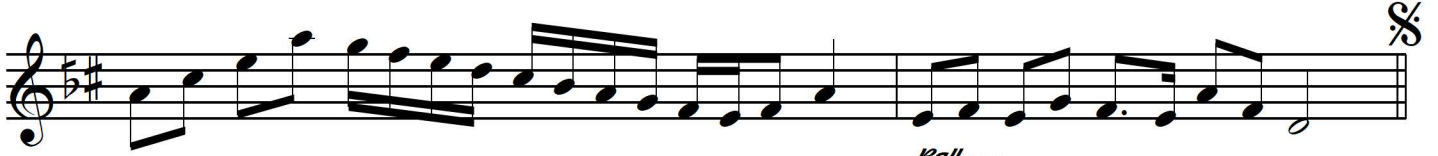
Sengin Semâi ♩ = 120



Sultânî-Yegâh Saz Eseri

(Usûl fihristli)

- 3 -

Ferit Sidal (Tanbûri)
(01.03.1925 - 09.08.2001)

Devrihindî ♩ = 140



Sultânî-Yegâh Saz Eseri

(Usûl fihristli)

- 4 -

Ferit Sidal (Tanbûri)
(01.03.1925 – 09.08.2001)**Müsemmen (Katikoftî)** ♩ = 128

6
Hâne

Aksak ♩ = 216

7
Hâne

Evfer ♩ = 252

Sultânî-Yegâh Saz Eseri

(Usûl fihristli)

- 5 -

Ferit Sidal (Tanbür)
(01.03.1925 - 09.08.2001)**Oynak** ♩ = 144

Musical notation for the Oynak section, measures 1-3. The notation is in treble clef, 5/8 time, and D major. It features a series of eighth and sixteenth notes with various accidentals and dynamics markings.

Raks Aksağı ♩ = 252

Musical notation for the Raks Aksağı section, measures 1-2. The notation is in treble clef, 9/8 time, and D major. It features a series of eighth and sixteenth notes with various accidentals and dynamics markings.

Çurçuna ♩ = 240

Musical notation for the Çurçuna section, measures 1-5. The notation is in treble clef, 10/8 time, and D major. It features a series of eighth and sixteenth notes with various accidentals and dynamics markings. The section ends with a double bar line and a repeat sign.