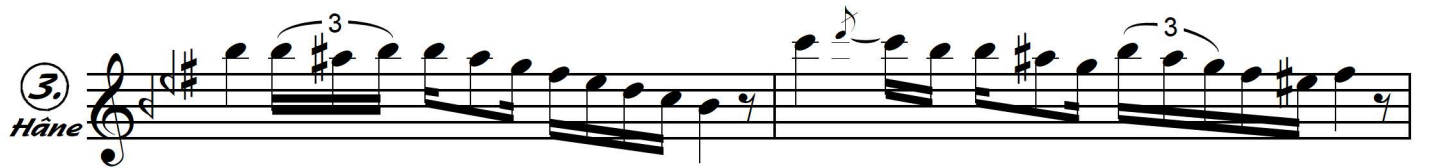
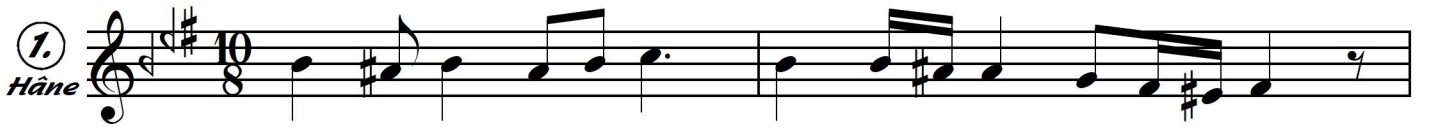


Aksak Semâî ♩ = 112



Sengin Semâî



Segâh Saz Semâî

— 2 —

Sâdi Şılay (Kemânî)
(05.02.1899 — 11.03.1969)

Yürük Semâî



Musical notation for Yürük Semâî, consisting of three staves of music in G major (one sharp) and 2/4 time. The first staff begins with a repeat sign and a fermata. The second staff continues the melody with a fermata. The third staff concludes the piece with a fermata.

Semâî



Musical notation for Semâî, consisting of three staves of music in G major (one sharp) and 3/4 time. The first staff begins with a repeat sign and a fermata. The second staff continues the melody. The third staff concludes the piece with a fermata.

Yücel
15.01.2011

Tashih: Salih Bilgin