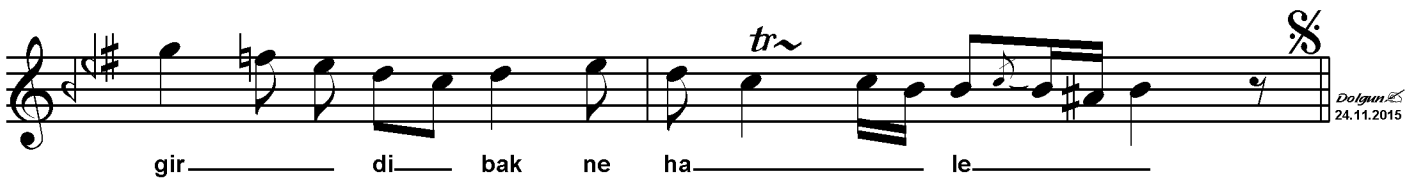
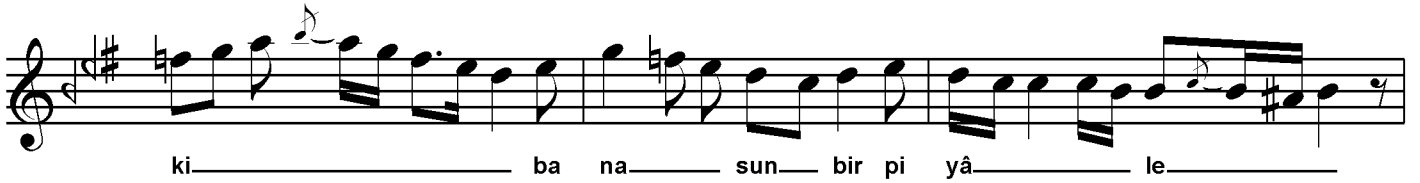


Segâh Şarkı

Gel ey sâki bana sun bir piyâle

Beste: Tanbûri Cemil Bey
Güfte: ?

Aksak



*Gel ey sâki bana sun bir piyâle
Erişdi mevsim-i gül faslı lâle
Hezâr-ı nevbahar erdi visâle
Gönül hasretle girdi bak ne hale*