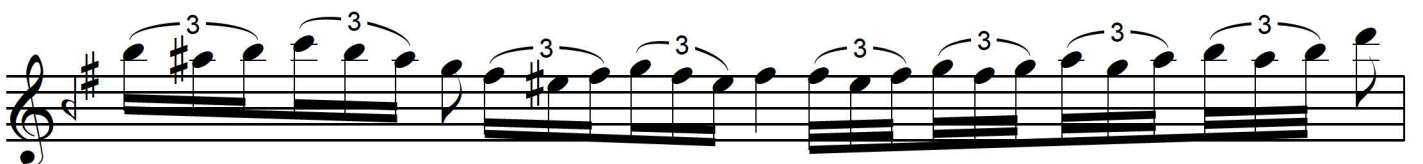
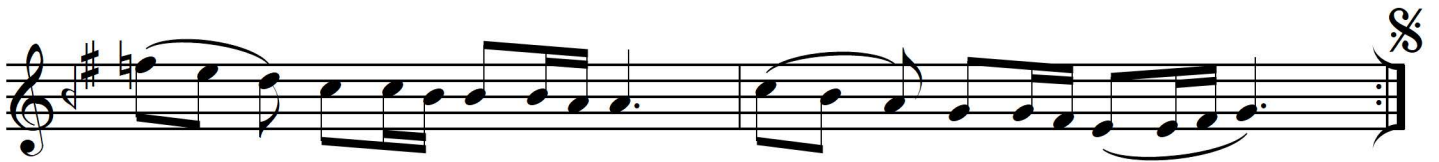
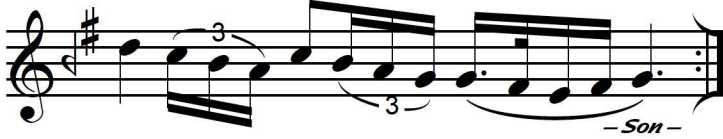
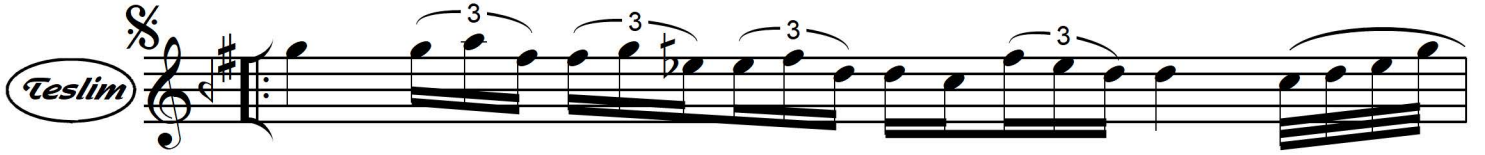


Aksak Semâî ♩ = 112



Rast Saz Semâî

"Nağme-i Hicran"

- 2 -

Volkan Gidiş (Kânûnî, Doç. Dr.)

Musical notation for the first two staves of the piece. The first staff contains a melodic line with a long slur over the first four notes and three triplet markings. The second staff continues the melody with similar triplet markings and ends with a double bar line and a repeat sign.

Semâî ♩ = 138

4. Hâne

Musical notation for the third staff, starting with a circled '4.' and the word 'Hâne'. It shows a 3/4 time signature and a key signature of one sharp. The staff contains a melodic line with a first ending bracket labeled '1' and a second ending bracket labeled '2'.

Musical notation for the fourth staff, continuing the melodic line from the previous staff.

Musical notation for the fifth staff, continuing the melodic line from the previous staff.

Yavaşlayarak...

Musical notation for the sixth staff, starting with the instruction 'Yavaşlayarak...'. It shows a melodic line that ends with a double bar line and a repeat sign.