

Rast Şarkı

Neyledi gör bana ol mâh-ı mehi

- 1 -

Beste: Hacı Ârif Bey
Güfte: ?

Curcuna



Ney___ le___ di___ gör___ ba___ na___ ol___ ma___ hı___ me___ hi___



hi___ SAZ___ Da___ ğa___ dü___ şür___



di___ di___ li___ di___ va___ ne___ yi___ da___ ğa___ dü___ şür___



di___ di___ li___ di___ va___ ne___ yi___ *Aranâğme*___



Keşt___ i___ de___ rim___ aşk___ i___ le___ diş___



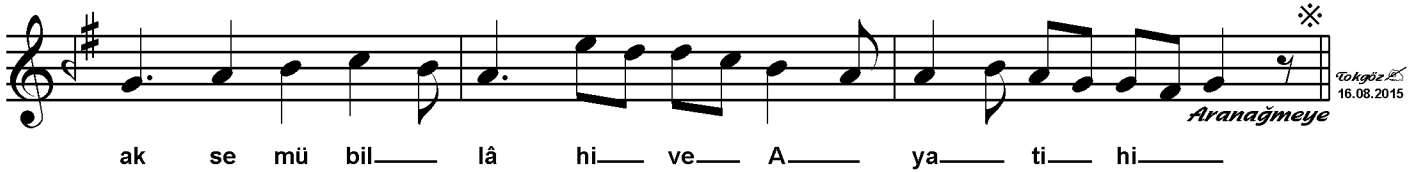
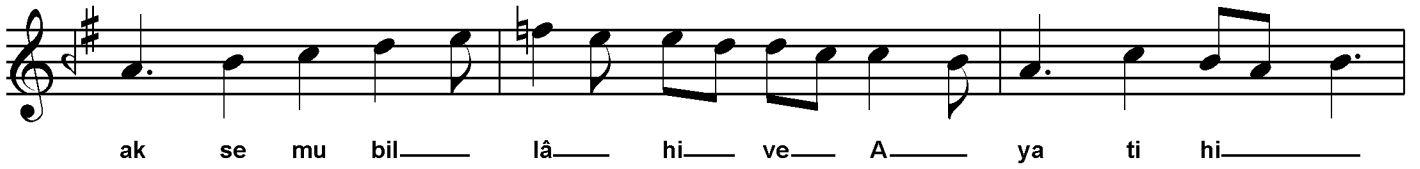
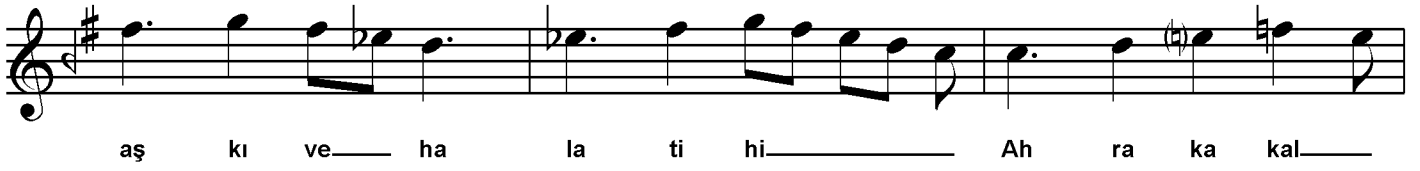
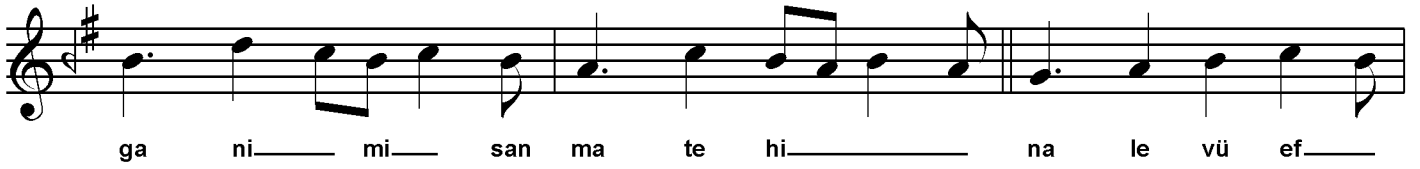
ti___ de___ hi___ keşt___ i___ de___ rim___ aşk___ i___ le___ diş___



ti___ de___ hi___ SAZ___ nâ___ le___ vü___ ef___

Rast Şarkı*Neyledi gör bana ol mâh-ı mehi**Beste: Hacı Ârif Bey**Güfte: ?*

- 2 -

Tokgöz
16.08.2015

*Neyledi gör bana ol mâh-ı mehi
Dağa düşürdü dili divâneyi
Keş iderim ah ile deşti dehi
Nalevü efgânımı sanma tehi
Ah minel aşk ve hâlâtihi
Ah raka kalbi bi hararatihî
Mane zarel aynı ilâ gayrikum
Uksimu billâhi ve ayatihî*