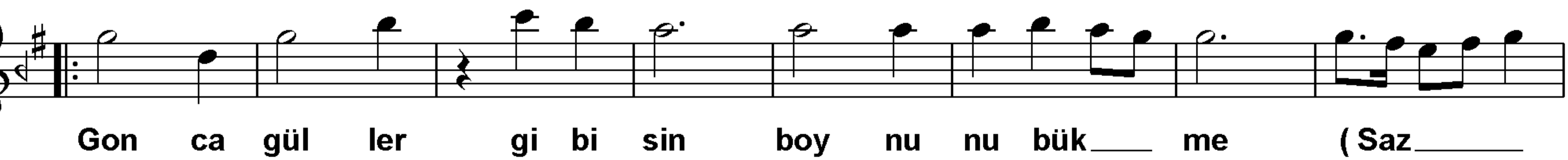
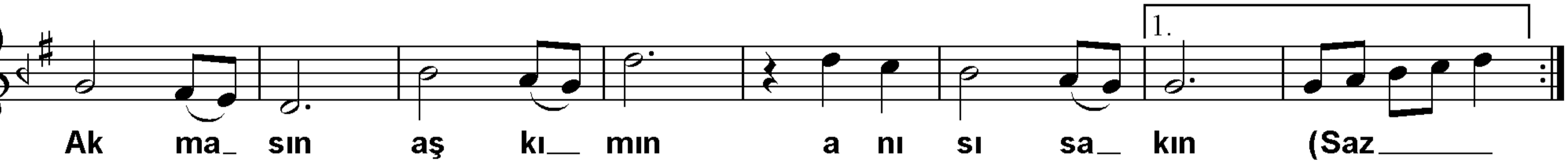
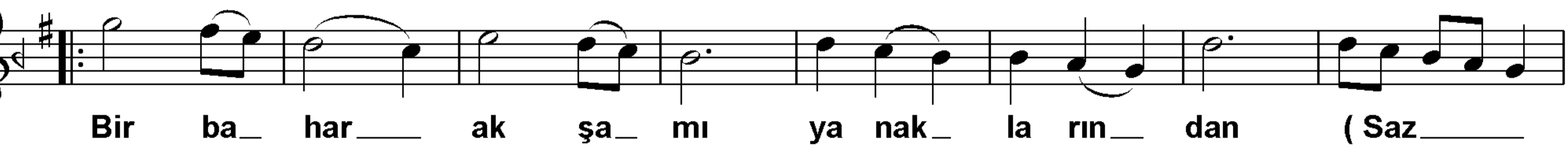
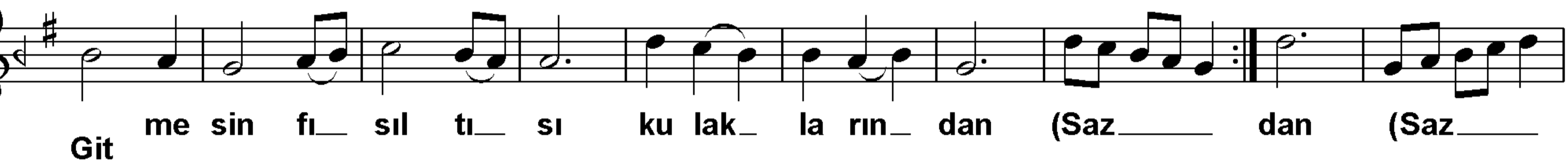
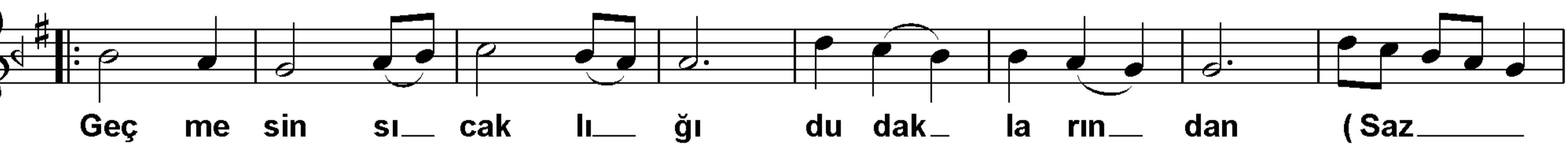


TRT Rep.No: 4612

AŞK ANISI

(GEÇMESİN SICAKLIĞI DUDAKLARINDAN)

Semai
=192 Aranağme

(GEÇMESİN SICAKLIĞI DUDAKLARINDAN)

(2)

Bek le__ be ni__ kim se__ ye gü zel__ gö zük__ me (Saz__

Yak ma sın aş kı__ min a nı sı sa__ kın (Saz__ (son)

The image shows two staves of musical notation in G major (one sharp) and 4/4 time. The first staff contains the melody for the first line of the song, with lyrics 'Bek le__ be ni__ kim se__ ye gü zel__ gö zük__ me (Saz__'. The second staff contains the melody for the second line, with lyrics 'Yak ma sın aş kı__ min a nı sı sa__ kın (Saz__ (son)'. The second staff includes a first ending (1.) and a second ending (2.) marked with a double bar line and repeat signs.

GEÇMESİN SICAKLIĞI DUDAKLARINDAN
GİTMESİN FISILTISI KULAKLARINDAN
BİR BAHAR AKŞAMI YANAKLARINDAN
AKMASIN AŞKIMIN ANISI SAKIN

GONCA GÜLLER GİBİSİN BOYNUNU BÜKME
ARILAR GİBİ HÜRSÜN BALINI DÖKME
BEKLE BENİ KİMSEYE GÜZEL GÖZÜKME
YAKMASIN AŞKIMIN ANISI SAKIN