

Nühüft Saz Semâî

- 1 -

Esad Efendi (Şeyhülislâm,
Mehmed, Ebû-Şhak-zâde)
(Ekim 1685 – 09.08.1753)

Yürük Semâî ♩ = 112

1. Hâne



2. Hâne Teslim



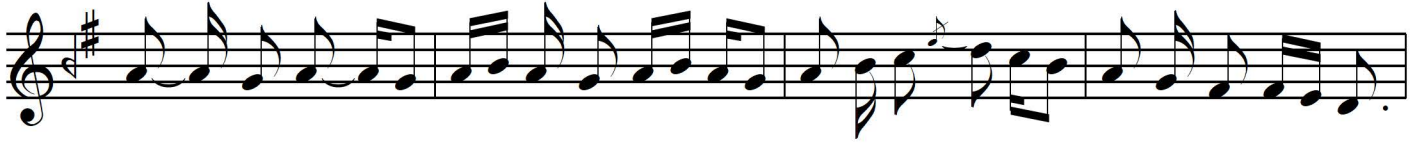
Curcuna ♩ = 46



Nühüft Saz Semâî

- 2 -

Esad Efendi (Şeyhülislâm,
Mehmed, Ebû-Şshak-zâde)
(Ekim 1685 – 09.08.1753)



- Son -



Nühüft Saz Semâî

Esad Efendi (Şeyhülislâm,
Mehmed, Ebû-Şshak-zâde)
(Ekim 1685 – 09.08.1753)

The image displays a musical score for the piece "Nühüft Saz Semâî" on page 3. The score is written on ten staves, each containing a line of music. The key signature is one sharp (F#) and the time signature is 2/4. The music is written in a style characteristic of Ottoman Sema'î, featuring a mix of eighth and sixteenth notes, often with grace notes and slurs. The notation includes various accidentals and ornaments typical of the genre.

4.
Hâne

Yücel Müzik
22.03.2021