

Nihâvend Şarkı

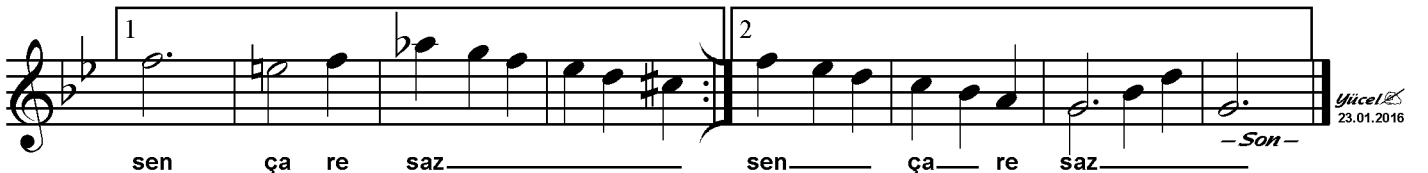
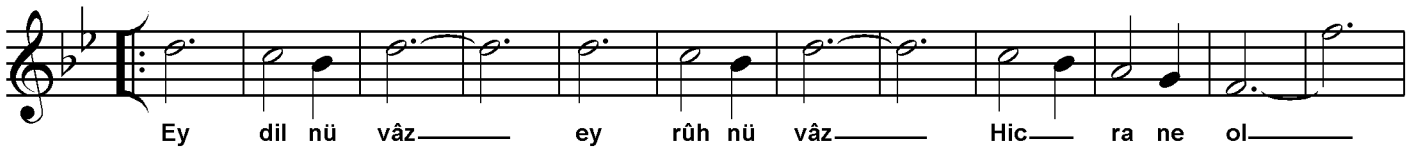
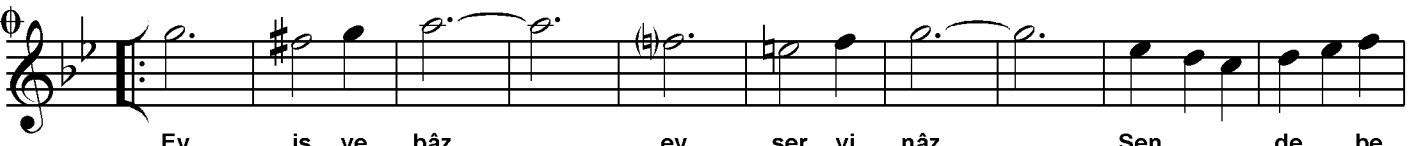
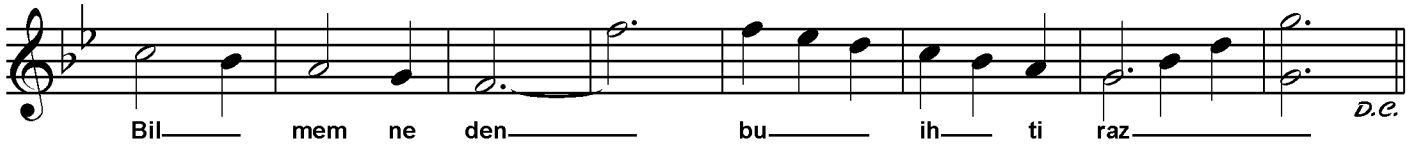
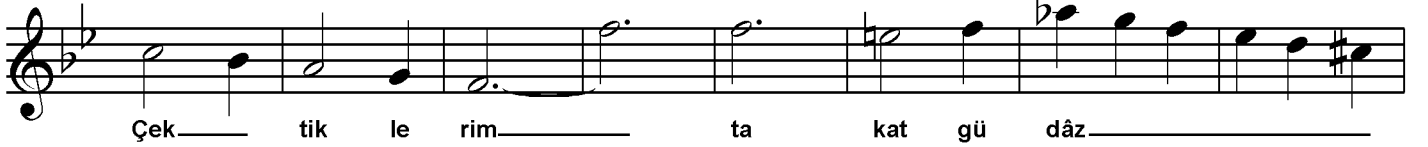
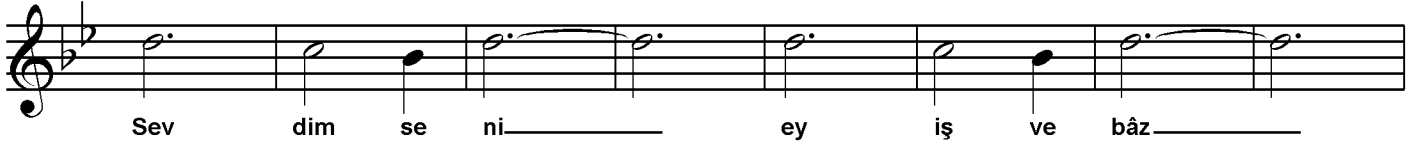
Sevdim seni ey işve-bâz

Beste: Cemil Bey (Tanbûri)

(09.05.1871 – 04.08.1916)

Güfte: ?

Semâî ♩ = 176

Yücel
23.01.2016

İşve-bâz: İşveyle oynayan
Takat-güdâz: Takatı mahveden
Niyâz: Yalvarma
İhtiraz: Çekinme
Servi-nâz: Servi boylu
Dil-nüvâz: Gönül okşayan
Ruh-nüvâz: Ruh okşayan
Çare-sâz: Çare bulan

Sevdim seni ey işve bâz
Çektiklerim takat güdâz
Bunca zaman ettim niyâz
Bilmem neden bu ihtiraz

Ey işve-baz ey ey dil-nüvâz
Sen de beni sevsen biraz
Ey dil-nüvâz ey ruh-nüvâz
Hicrane ol sen çaresâz