

# Nihâvend Saz Eseri

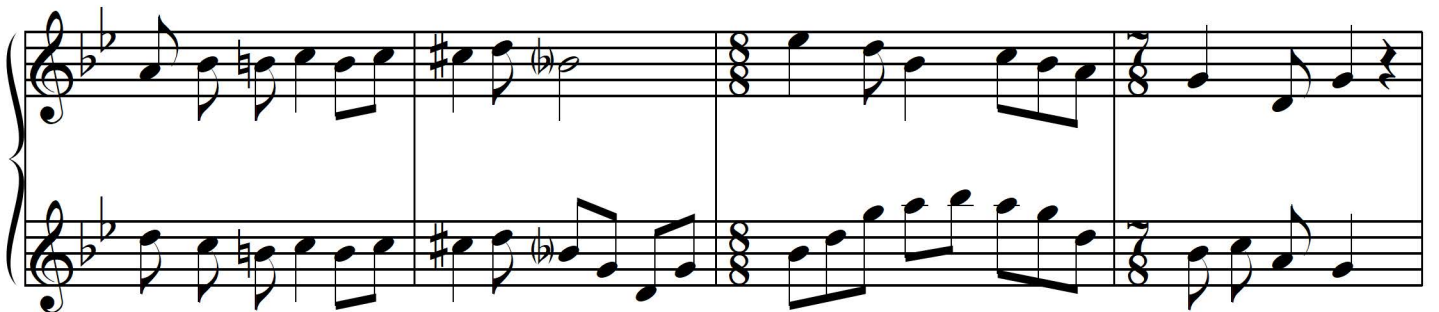
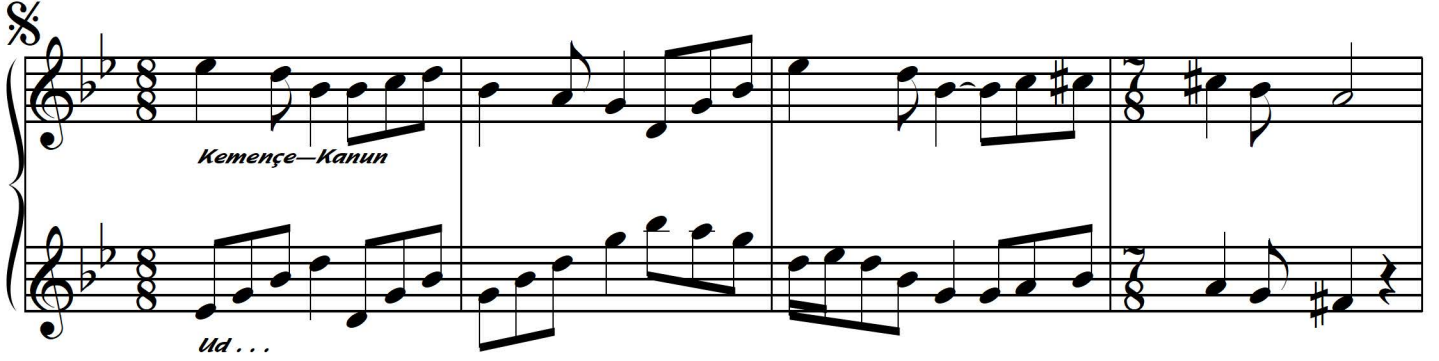
Müsemmen (Katikofti)—Devrihindî

"Gökkuşığı"  
(Kemençe, ud ve kanun için)

Göksel Baktadır (Kanûni)  
(Kırklareli, 1966 —)  
Beste Tarihi: Üst Bostancı, 1991—1993

Müsemmen ♩ = 96

— 1 —



# Nihâvend Saz Eseri

## "Gökkuşağı"

(Kemençe, ud ve kanun için)

Göksel Baktadır (Kanüni)

(Kırklareli, 1966 -)

Beste Tarihi: Üst Bostancı, 1991-1993

- 2 -

Beraber...

Musical notation for the Beraber section, featuring a single staff with a treble clef, a key signature of two flats, and a 7/8 time signature. The melody consists of eighth and quarter notes.

Kemençe...

Kanun...

Ud...

Musical notation for the instrumental section, featuring three staves. The top staff is for Kemençe, the middle for Kanun, and the bottom for Ud. The notation includes various rhythmic patterns and accidentals.

Kemençe...

Kanun...

Ud...

Musical notation for the instrumental section, featuring three staves. The top staff is for Kemençe, the middle for Kanun, and the bottom for Ud. The notation includes various rhythmic patterns and accidentals. A double bar line and repeat sign are at the end of the section.