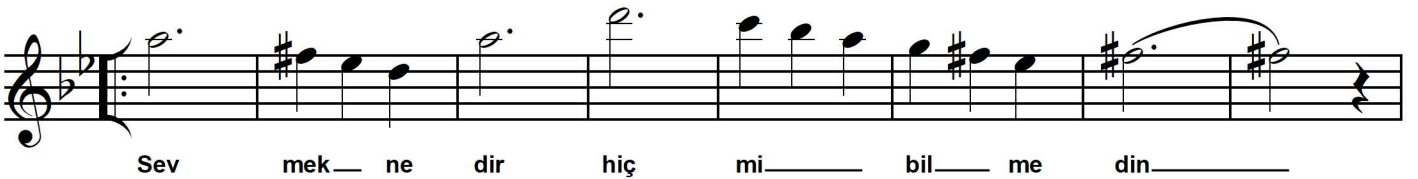
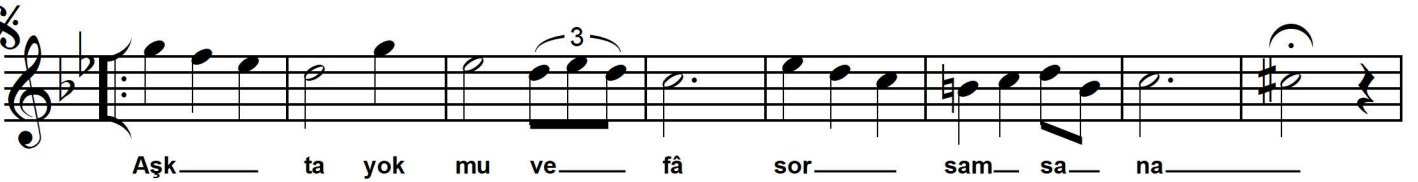
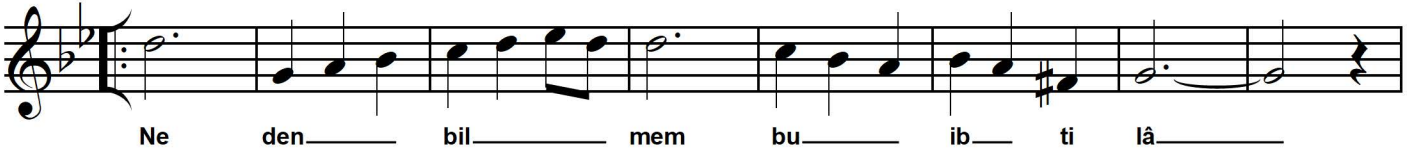
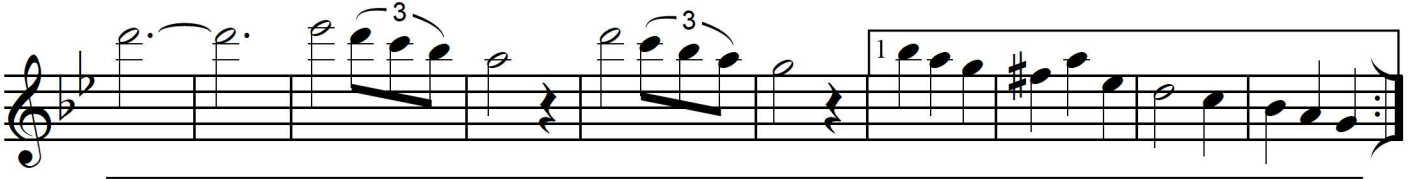
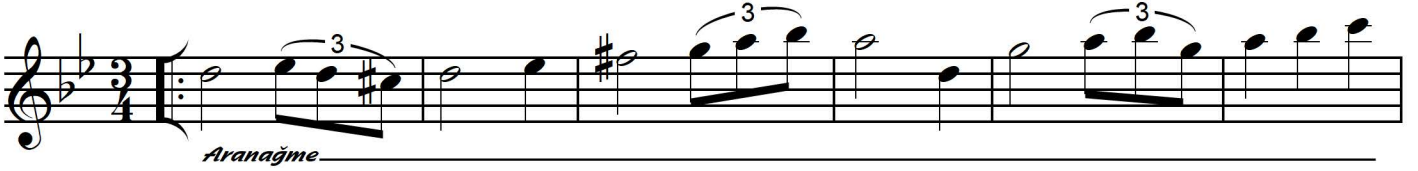


Nihâvend Şarkı*Neden bilmem bu ibtilâ***Beste ve Güfte:***Neveser Kökdeş (1904 – 1962)*

Semâî ♩ = 144

*Neden bilmem bu ibtilâ, günden güne halim fena**Aşkda yok mu vefa sorsam sana, hastadır gönlüm inan bana**Sevmek nedir hiç mi bilmedin, aylar geçti seni görmedim**Aşkda yok mu vefa sorsam sana, hastadır gönlüm inan bana*