

Hüseyinî Mehter

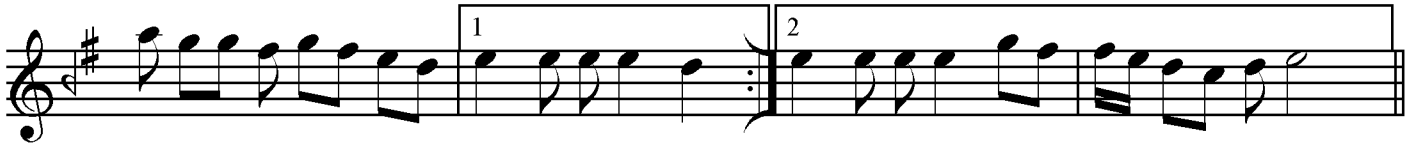
"No: 2"

- 1 -

Hasan Cân Çelebi
(1490? - 1567)

Düyek ♩ = 240

Ser-hâne



Mülâzime



- Son -

Hüseyinî Mehter

"No: 2"

- 2 -

Hasan Cân Çelebi
(1490? - 1567)

Hâne-i sânî

Musical notation for Hâne-i sânî, consisting of seven staves. The key signature is one sharp (F#) and the time signature is 2/4. The notation includes various rhythmic patterns, including eighth and sixteenth notes, and rests. There are two first endings (marked '1') and one second ending (marked '2') indicated by brackets and numbers above the notes. The piece concludes with a double bar line and a repeat sign.

Hâne-i sâlis

Musical notation for Hâne-i sâlis, consisting of four staves. The key signature is one sharp (F#) and the time signature is 2/4. The notation includes various rhythmic patterns, including eighth and sixteenth notes, and rests. There are two first endings (marked '1') and one second ending (marked '2') indicated by brackets and numbers above the notes. The piece concludes with a double bar line and a repeat sign.

Hüseyinî Mehter

"No: 2"

- 3 -

Hasan Cân Çelebi
(1490? - 1567)

