

Çifte Düyek

Yar Su sus ma sin
Yar Ca can ve ren

Fâhte

gü na gül nağ

şe ni can
me si bi

Cember

bül can bü la

lü ra fer im yâd dat et et sin sin

Devr-i Kebir

tir ye lel lel lel le lel lel

lel lel li ya la ya le lel li bi

Ber-eşân

bül can bü lü la ra fer im yâd dâd

et sin et sin hey ca nım hey ca nım

Çifte Düyek *Meyan*

yar Ne o lur

Fâhte

gü gül

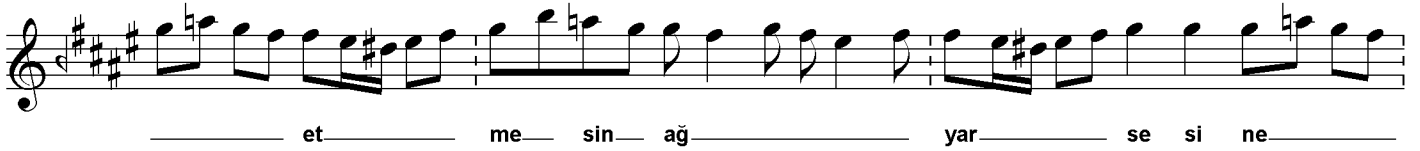
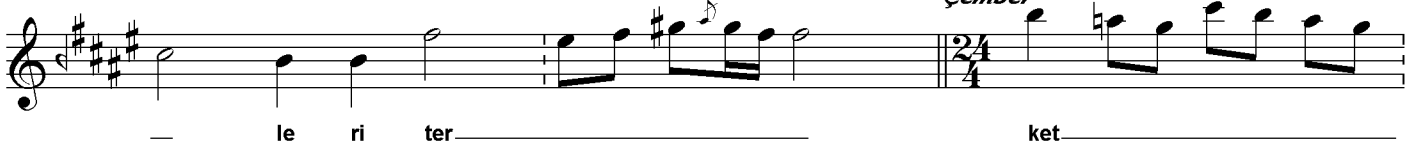
Ëvc-ârâ Beste

Susmasın gülşen-i can bülbülü feryâd etsin

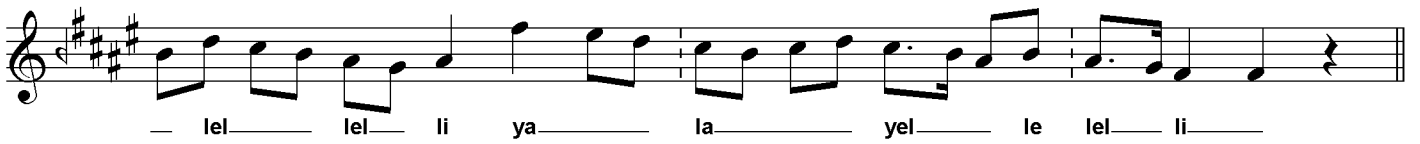
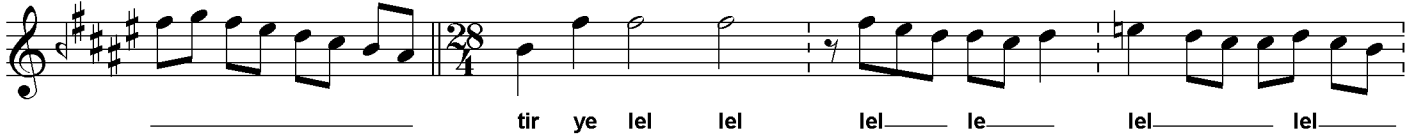
- 2 -

Beste: Alâeddin Yavařça
Güfte: Mustafa Tahralı

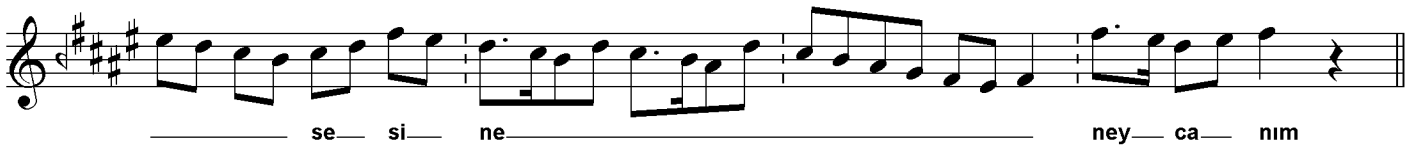
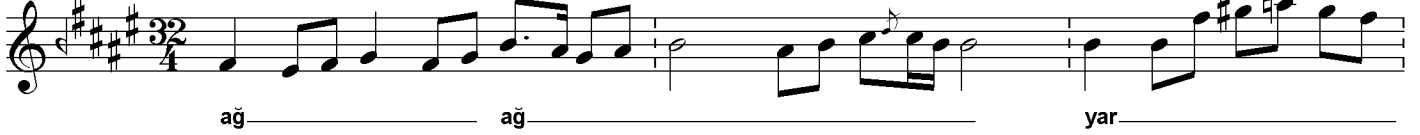
Çember



Devr-i Kebir



Ber-efşân



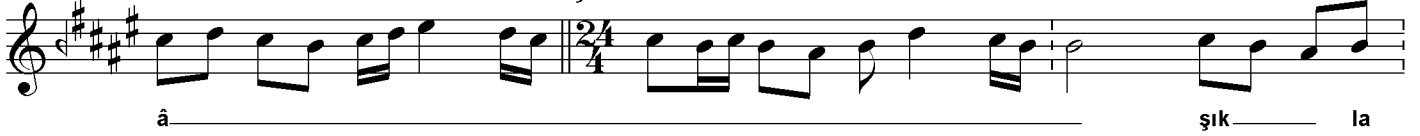
Çifte Düyek



Fâhte



Çember



Devr-i Kebir

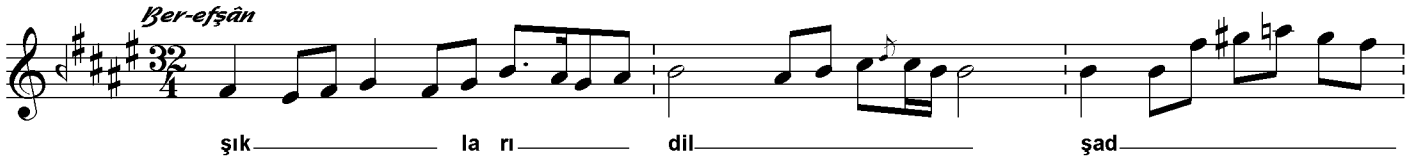
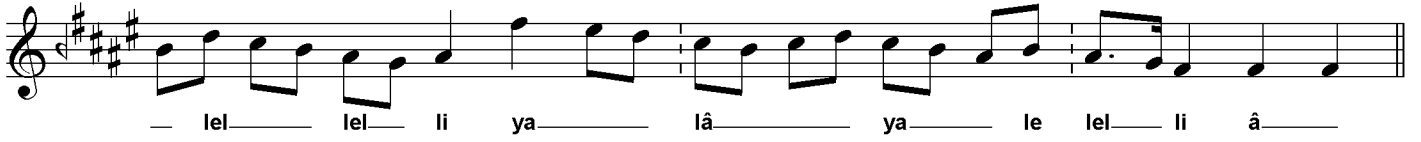


Ėvc-ârâ Beste

Susmasın gülşen-i can bñlbñlü feryâd etsin

Beste: Alâeddin Yavaşça
Güfte: Mustafa Tahralı

- 3 -



Dolgun
14.04.2011

*Susmasın gülşen-i can bñlbñlü feryâd etsin
Can veren nađmesi bi-canlara imdâd etsin
Ne olur gülleri terk etmesin ađyar sesine
Yâd edip derdini âşıkları dilşad etsin*