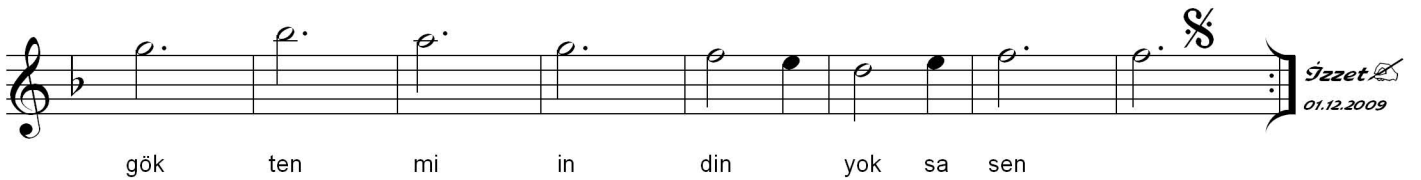
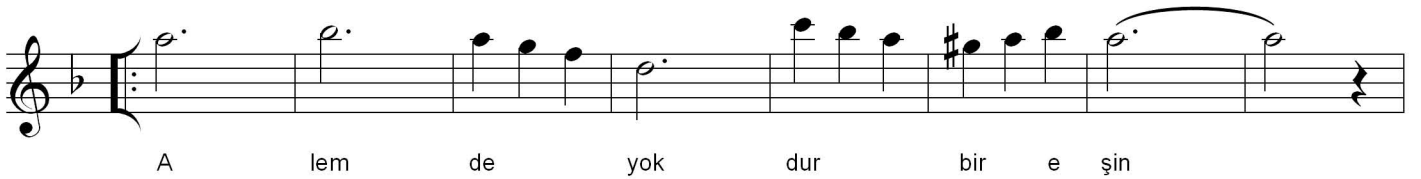
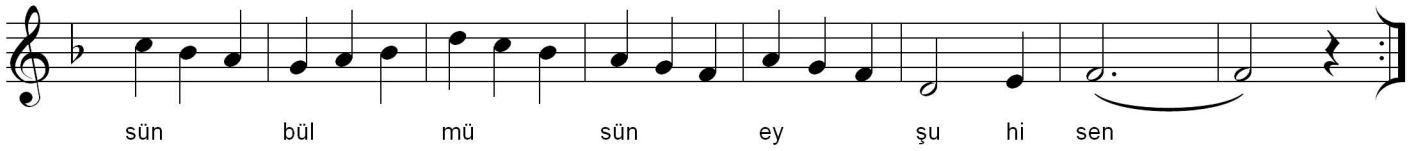
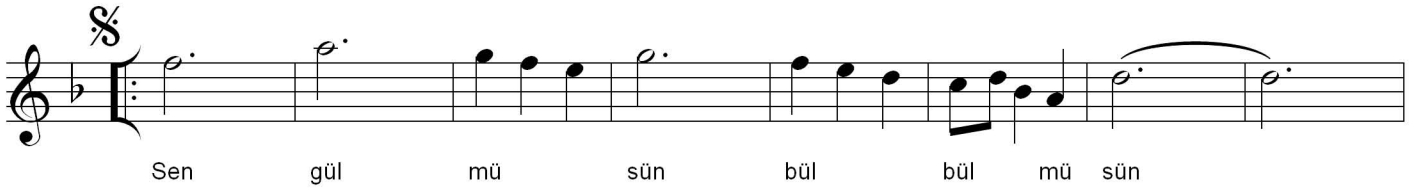
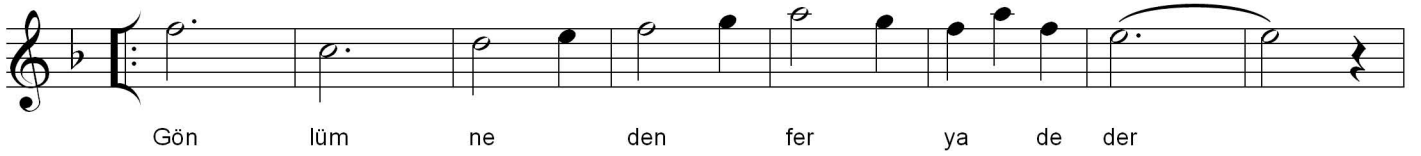
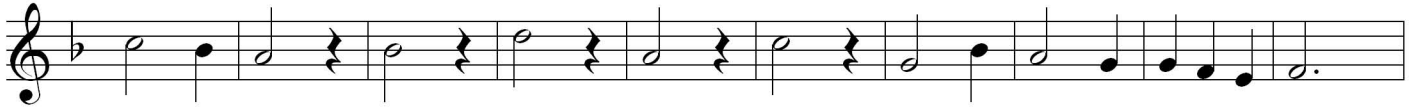
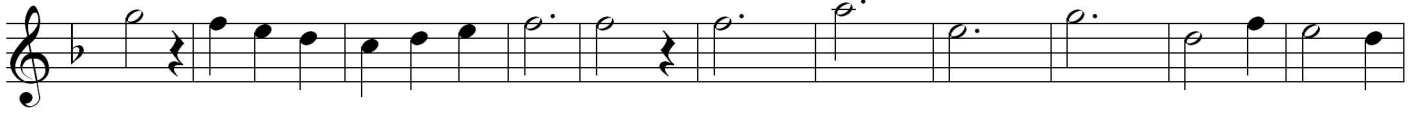


Acem aşîrân şarkı

Gönlüm neden feryad eder

Usûlü: Semâî



Gönlüm neden feryad eder
Ruhsarını gördükçe ben
Sen gülmüsün bülbülmüsün
Sünbülmüsün ey şuhi sen.

Alemde yoktur bir eşin
Göktenmi indin yoksa sen
Sen gülmüsün bülbülmüsün
Sünbülmüsün ey şuhi şen.