

Ber-küşâ-yı mâ'delet hâkân-ı devrân dâima

Usûlü: Devr-i Kebîr

- 1 -

Beste: Basmacı Abdi Efendi

Güfte:?

BE  
A  
PE

BER  
A  
PER

KÛ  
Şİ  
TE

ŞA  
YAN  
Vİ

Yİ  
SAZ  
İK

MA  
O  
BA

MA  
O  
BA

DE  
LA  
Lİ

LET  
EV  
NE

HA  
Cİ  
REŞ

HA  
SA  
KE

KA  
SAL  
KEY

NI  
TA  
LE

DEV  
NAT  
SİN

RAN  
DA  
MİH

DA  
ÇÜ  
RÜ

DA  
ÇÜN  
RÜ

İ  
HÛ  
SE

MA  
MA  
MA

VAY  
VAY  
VAY

CA NIM YA LA YE LE LEL LEL LEL LEL LEL Lİ

TE RE Lİ YE LE LE LE LE LE LEL LEL LEL Lİ

HA  
SA  
REŞ

KA  
SAL  
KEY

NI  
TA  
LE

DEV  
NAT  
SİN

RAN  
DA  
MİH

DA  
ÇÜ  
RÜ

DA  
ÇÜN  
RÜ

İ  
HÛ  
SE

MA  
MA  
MA

VAY  
VAY  
VAY

( Son )

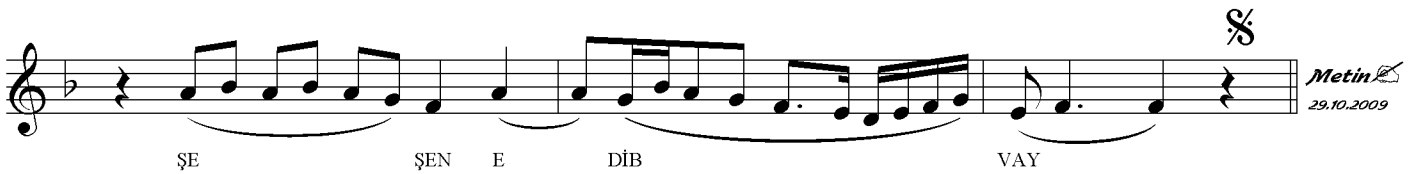
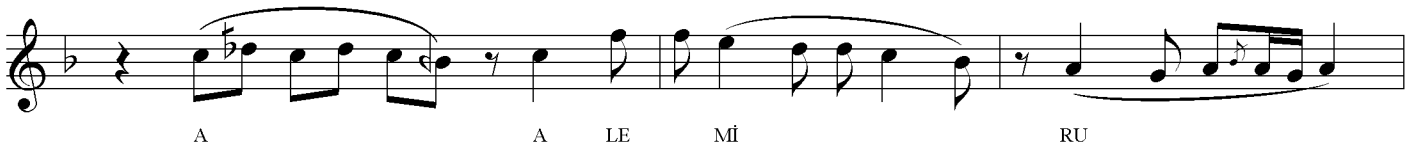
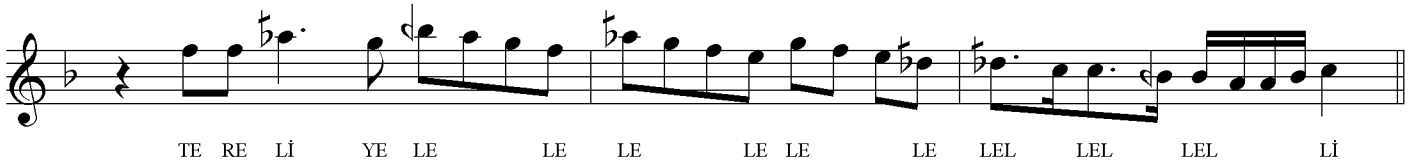
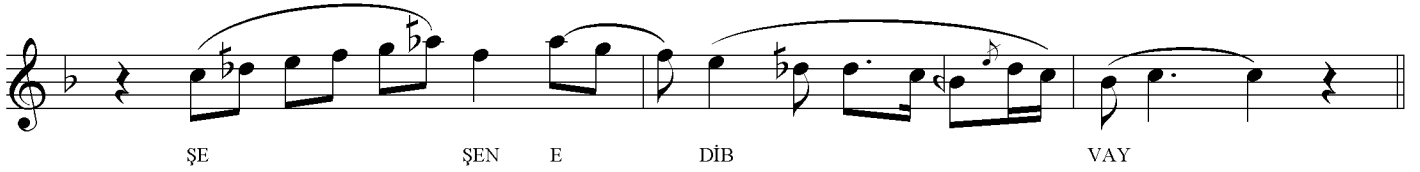
LE LEM A İ EN

Ber-küşâ-yı mâ'delet hâkân-ı devrân dâima

- 2 -

Beste: Basmacı Abdi Efendi

Güfte:?

Metin  
29.10.2009

## MEDHİYE

BER KÜŞAYI MADELET HAKANI DEVRAN DAİMA  
AŞİYAN SAZ OLA EVCİ SALTANATDA CÜN HÜMA  
LEMÂİ ENVARİ LUTFU ALEMİ RUŞEN EDİB  
PERTEVİ İKBALİNE REŞK EYLESİN MİHRİ SEMA