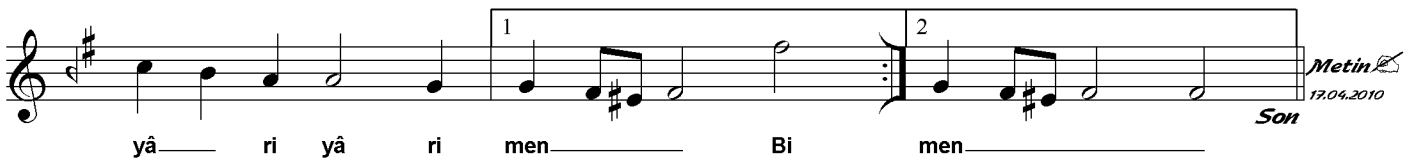
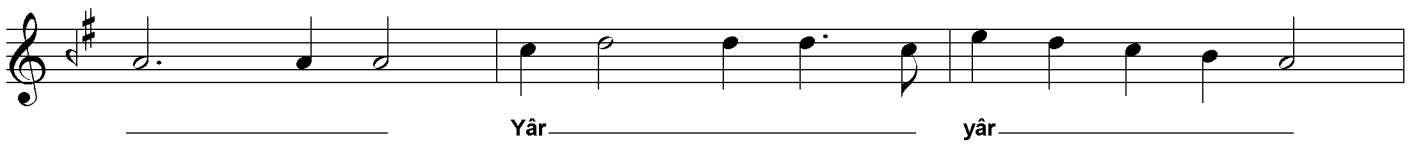
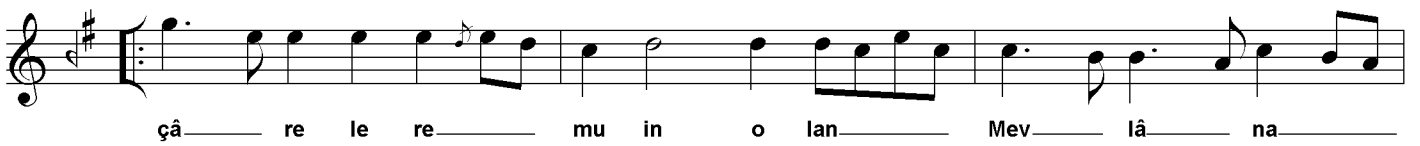
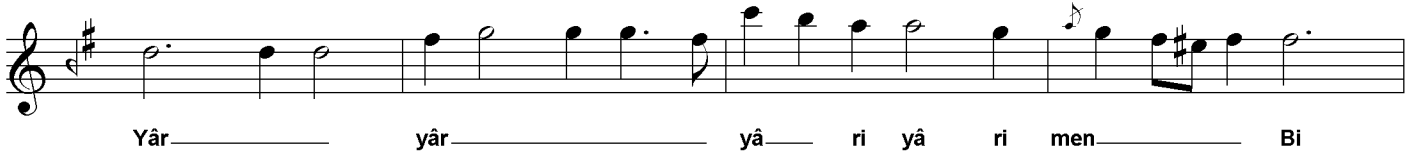
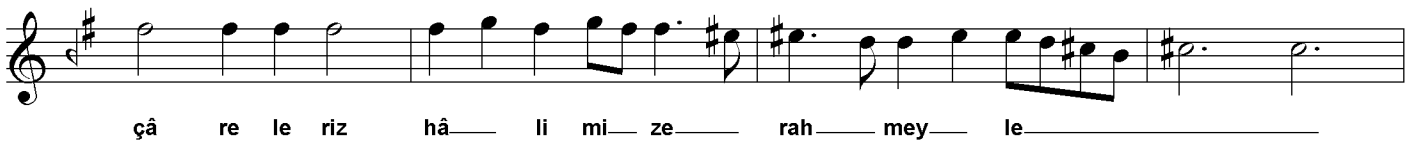
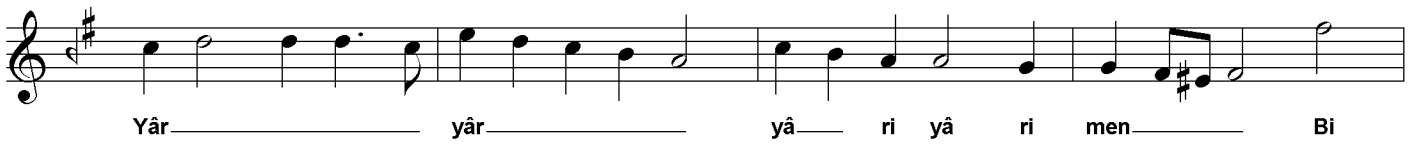
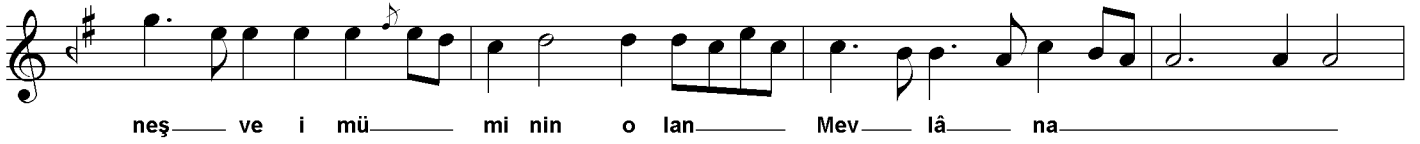


Ey maksad-ı âşıkın olan Mevlâna

Beste: Dede İsmail Efendi
Güfte: Dede Efendi

Yürük Semâi ♩ = 132

Metin
17.04.2010

Son

Ey, maksad-ı âşıkın olan Mevlâna
Vay, neş'e-i müminin olan Mevlâna
Biçarelerim hâlimize rahmeyle
Biçarelere muin olan Mevlâna