

SÛZİDİLÂRÂ PEŞREV

Devr-i Kebîr

Sultan Üçüncü Selim

Musical notation for the first section of the piece, Devr-i Kebîr. It consists of four staves of music in 2/8 time. The first staff starts with a treble clef and a 28-measure rest. The music is written in a key with one sharp (F#) and a 2/8 time signature. The notation includes various rhythmic values such as eighth and sixteenth notes, and rests.

İkinci Hane

Musical notation for the second section of the piece, İkinci Hane. It consists of four staves of music in 2/8 time. The first staff starts with a treble clef and a 5-measure rest. The music is written in a key with one sharp (F#) and a 2/8 time signature. The notation includes various rhythmic values such as eighth and sixteenth notes, and rests.

Üçüncü Hane



Musical notation for the Üçüncü Hane section, consisting of four staves of music. The notation is in treble clef and features a variety of rhythmic patterns, including eighth and sixteenth notes, and rests. The key signature is one sharp (F#).

Dördüncü Hane



Musical notation for the Dördüncü Hane section, consisting of four staves of music. The notation is in treble clef and features a variety of rhythmic patterns, including eighth and sixteenth notes, and rests. The key signature is one sharp (F#).

SÛZİDİLÂRA MEVLEVÎ ÂYİN-İ ŞERİF'İ

BİRİNCİ SELÂM

Ağır Düyek

Sultan Üçüncü Selim



HEY YAR DİL BE Rİ VÜ Bİ Dİ Lİ ES
HEY YAR KA RI KA RI MAS TI ÇÜN O



RA RI MAST HEY YAR
YA RI MAST HEY YAR



HEY DOST YAR Pİ Rİ MEN
HEY DOST YAR Pİ Rİ MEN



HEY YAR NEV BE Tİ KÖH NE FÜ RU ŞAN



DER GÜ ZEŞT HEY YAR



HEY DOST YAR Pİ Rİ MEN



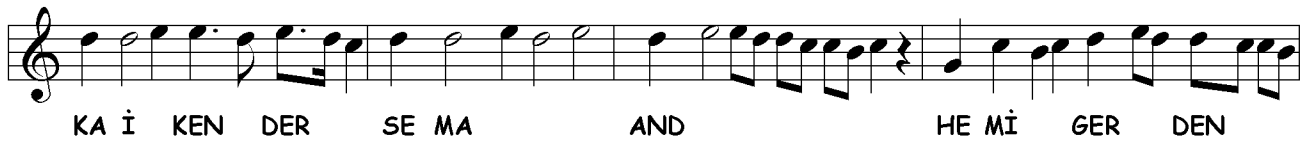
HEY YAR NEV FÜ RU ŞA NÎ MÜ İN BA



ZA RI MAST HEY YAR



HEY DOST YAR Pİ Rİ MEN





Tİ Rİ NA ZA RAN ÇÜ NAN Kİ HA Hİ Mİ ZEN AH
Bİ HOD Bİ Nİ ŞİN KU Sİ İ LA Hİ Mİ ZEN AH



HEY HEY HEY HEY HEY HEY HEY DOST DOST



İH SAN ME DED GUF RAN ME DED YAR



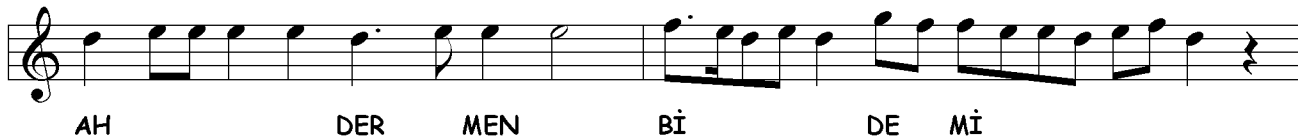
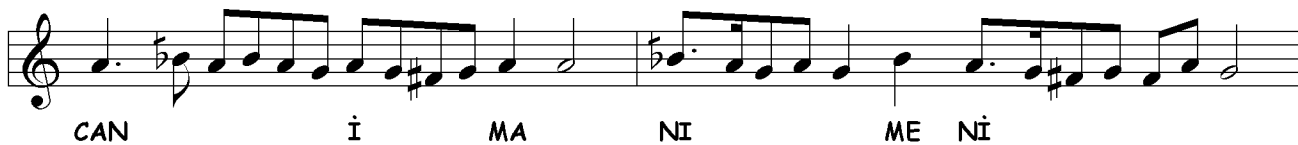
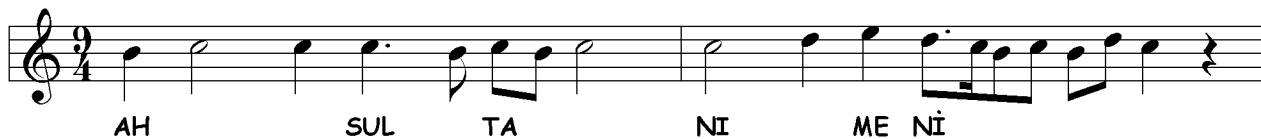
YAR YAR YAR YA Rİ MEN



İKİNCİ SELÂM

www.heyzen.com

Evfer



www.heyzen.com

The image displays a musical score for a single melodic line, consisting of eight staves of music. The notation is written in a treble clef and 12/4 time signature. The key signature is one sharp (F#). The music features a variety of rhythmic patterns, including eighth and sixteenth notes, often beamed together in groups. There are several accidentals throughout, including sharps and flats. The final measure of the piece is a double bar line followed by the time signature 12/4.

ÜÇÜNCÜ SELÂM

www.heyzen.com

Frenkçin

MUT KIS RI SA BA HA ES YI RA CAN

RI MA FE MA ZA RA RA AH BAZ AH BAZ GÛ GÛ

MAH ZE Nİ İN NA

FE TAH NA NA AH BER GÛ ŞA

SIR RI CA NI

MUS TA FA RA BAZ GÛ

EY Kİ HE ZAR A FE RİN AH BU Nİ CE SUL TAN O LUR
HER Kİ BU GÜN VE LE DE AH İ NA NU BEN YÜZ SÜ RE



KU LI O LAN Kİ Şİ LER AH HUS RE VÜ HA
YOK SUL İ SE BAY O LUR AH BAY İ SE SUL



KAN O LUR A MAN HUS RE VÜ HA KAN O LUR
TAN O LUR A MAN BAY İ SE SUL TAN O LUR



KA RI NE DA REM CÜ ZİN KA RI GE HÜ KA REM OST
LA FI ZE NEM LA Fİ LAF ZAN Kİ HA Rİ DA REM OST



CA NÜ Dİ LEM SA Kİ NEST ÇÜN Kİ Dİ LÜ CA NEM OST



KA Fİ LE EM EY ME NEST KA Fİ LE SA LA REM OST



Hİ Zİ Kİ İM RU Zİ Cİ HAN A Nİ MAST CA NÜ Cİ HAN SA Kİ VÜ MİH



MA Nİ MAST ZÜH RE VÜ MEH DEF ZE NÜ ŞA Dİ İ MAST BÜL BÜ Lİ CAN



MES TI GÜ LIS TA NI MAST



AH GÜ ZE LİN AŞ KI NA HA LA TI NA A MAN



YAN DI YÜ REK AŞK HA RA RA TI NA AH



AND İ ÇE YİM GAY RI GÜ ZEL SEV ME YİM AH



TAN RI YE VÜ TAN RI NİN A YA TI NA



EY



KA ŞI Fİ ES RA RI HU DA MEV LA NA SUL



TA NI FE NA ŞA HI BE KA MEV LA NA AŞK



İT ME DE DİR HAZ RE Tİ NE BÖY LE Hİ TAB MEV



LA YI GÜ RU Hİ EV Lİ YA MEV LA MEV



LA YI GÜ RU Hİ EV Lİ YA MEV LA NA NA

DÖRDÜNCÜ SELÂM

Evfer

SUL TA NI ME Nİ

(Saz) SUL TA NI ME Nİ

Nİ EN DER Dİ LÜ CAN

CAN İ MA NI ME Nİ

AH DER MEN Bİ DE Mİ

Mİ MEN ZİN DE ŞE VEM

VEM YEK CAN Çİ ŞE VED

VED SAD CA NI ME Nİ

AH İ MA NI ME Nİ

SON PEŞREV

Düyek

Musical score for SON PEŞREV, Düyek. The score consists of eight staves of music in G major (one sharp) and 2/4 time. The melody is written in treble clef. The first staff starts with a treble clef and a key signature of one sharp. The music features a mix of eighth and sixteenth notes, with some triplet patterns. The piece concludes with a double bar line and a final cadence.

SON YÜRÜK

Yürük Semâî

Musical score for SON YÜRÜK, Yürük Semâî. The score consists of four staves of music in G major (one sharp) and 2/4 time. The melody is written in treble clef. The first staff starts with a treble clef and a key signature of one sharp. The music features a mix of eighth and sixteenth notes, with some triplet patterns. The piece concludes with a double bar line and a final cadence.