

PENCGÂH PEŞREV

Devr-i Kebîr

Salih Dede

28

TESLİM

2. Haneye ve basa

3. Haneye

4. Haneye

KARAR

İkinci Hane

§

Üçüncü Hane



Musical notation for Üçüncü Hane, consisting of four staves. The first staff begins with a treble clef, a key signature of one sharp (F#), and a 2/4 time signature. The melody is written in a single line. The second staff contains a measure with a fermata over a quarter note, followed by a sequence of eighth notes. The third staff continues the melody with eighth notes and a trill. The fourth staff concludes the section with a double bar line and a repeat sign.

Dördüncü Hane



Musical notation for Dördüncü Hane, consisting of four staves. The first staff begins with a treble clef, a key signature of one sharp (F#), and a 2/4 time signature. The melody is written in a single line. The second staff contains a measure with a fermata over a quarter note, followed by a sequence of eighth notes. The third staff continues the melody with eighth notes and a trill. The fourth staff concludes the section with a double bar line and a repeat sign.

PENCGÂH MEVLEVÎ ÂYIN-I ŞERÎF'I

BİRİNCİ SELÂM

Devr-i Revân



ŞEH BA ZI CE NA BI ZÜL ÇE LÂ LEST SE MA
FER RA ŞI KU LÜ Bİ EH Lİ HA LEST SE MA



HEY HEY HEY HEY HEY RA NA YI MEN CA NI MEN VAY



DER MEZ HE Bİ MÜN Kİ RAN HA RA MEST SE MA
DER MEZ HE Bİ A ŞI KAN HE LÂ LEST SE MA



HEY HEY HEY HEY HEY RA NA YI MEN CA NI MEN VAY



CA NI MEN HEY YAR RA NA YI MEN HEY HEY HEY



DOST Zİ BA YI MEN HEY HEY HEY YAR CA NI



MEN Mİ Rİ MEN AH HEY SUL TA NI MEN




VAY HEY HEY HEY HEY HEY HÜN KÂ RI MEN




VAY HEY YAR YAR YÜ RE ĞİM YAR HEY HEY HEY




HEY GÖR Kİ NE LER VAR HEY YAR EY SA NE Mİ



DOST SA NE Mİ Gİ RİZ PA
DOST GE LE YİM Dİ Dİ NE YA



YEM YA Rİ MEN EY GE LE YİM
MED YA Rİ MEN EY ME Hİ AH



DOST ME Hİ A Fİ TA BI RA YEM YA Rİ MEN



EY GE LE YİM DOST GE LE YİM Dİ Dİ NE YA



MED HEY YA RİM HEY Mİ RİM DOST GE LE YİM




Dİ Dİ NE YA MED AH



A TEŞ NE ZE NED DER Dİ Lİ MA İL LÂ HU
GER A LE Mİ YAN CÜM LE TA Bİ BAN BA ŞEND



CA NI MEN VAY KÛ TEH NE KÛ NED MEN Zİ Lİ MA
CA NI MEN VAY HAL Lİ NE KÛ NED MÜŞ Kİ Lİ MA



İL LÂ HU CA NI MEN AH CA NI MEN
İL LÂ HU




İKİNCİ SELÂM

Evfer

AH SÎ MÎN ZE KA NA SEN
 İN İN KA LI Bİ FER SÜ

Gİ DE Dİ LÂ LÂ LE İ Zİ
 GER EZ KÜ Yİ TÛ DÛ

RA REST HOŞ KÛN BE Nİ GÂ Hİ
 EL KAL BÛ A LÂ BA

Dİ Bİ Lİ GAM PER VE Rİ MA
 KE LEY LEN VE NE HA

RA RA HEY HEY SUL TA NI MEN
 HEY HEY SUL TA NI MEN

AH HEY HÛN KÂ RI MEN

HEY RA NA YI MEN

HEY Zİ BA YI MEN

28

ÜÇÜNCÜ SELÂM

Devr-i Kebîr



BİŞ GEZ NEV NE EZ YİS NEY TAN ÇÜN TA Hİ ME KÂ RA YET BÜB
 Mİ Rİ KÜ DE NED END BE Lİ YA Rİ MEN VAY VAY
 EZ CÜ NE DA Fİ YÎ REM HA MER Şİ DÜ KÂ ZEN YET NA
 Mİ Lİ KÜ DE NED END AH AH BE Lİ YA Rİ MEN AH AH
 SÎ NE HA HEM ŞER HA ŞER HA
 EZ Fİ RAK BE Lİ YA Rİ MEN VAY
 TA Bİ GÛ YEM ŞER Hİ DER Dİ İŞ Tİ YAK



EY Kİ HE ZAR A FE RİN
HER Kİ BU GÜN VE LE DE

BU Nİ CE SUL
İ NA NU BEN



TAN O LUR DOST DOST EY Kİ HE ZAR A FE RİN
YÜZ SÜ RE DOST DOST HER Kİ BU GÜN VE LE DE



BU Nİ CE SUL TAN O LUR
İ NA NU BEN YÜZ SÜ RE



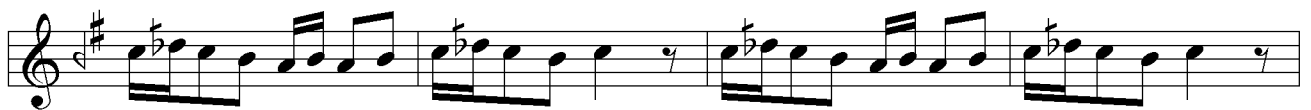
KU LI O LAN Kİ Şİ LER CA NİM HUS RE VÜ HA
YOK SUL İ SE BAY O LUR CA NİM BAY İ SE SUL



KAN O LUR KU LI O LAN KÜ Şİ LER
TAN O LUR YOK SUL İ SE BAY O LUR



CA NİM HUS RE VÜ HA KAN O LUR
CA NİM BAY İ SE SUL TAN O LUR





EY KAVM BE HAC REF TE KÜ CA YÎD KÜ CA YÎD



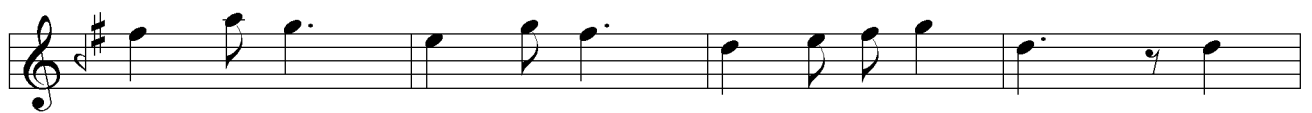
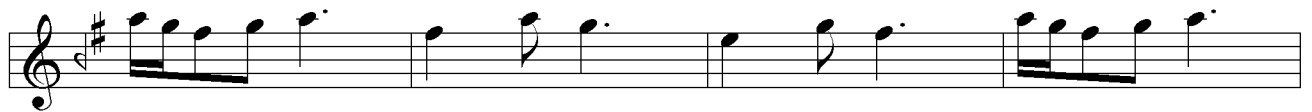
EY KAVM BE HAC REF TE KÜ CA YÎD KÜ CA YÎD

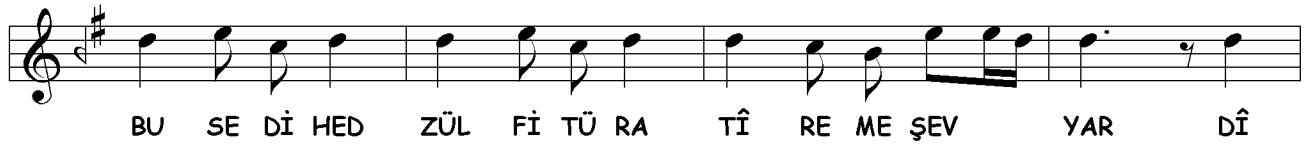


DİL DAR HE MİN CAST Bİ YA YÎD Bİ YA YÎD YA Rİ MEN YAR ME RA



AH YA Rİ MEN YAR ME RA DOST YA Rİ MEN YAR ME RA VAY





AH DOST MI NEL ASK VE HA LA TI HI
MI NEL ASK VE HA LA TI HI

AH RA KA KAL BI BI HA RA RA TI HI GAY RI KUM
MA NA ZA RAL AY NU I LA

(Saz) UK SI MU BIL LA HI VE A YA TI HI

(Saz) UK SI MU BIL LA HI VE A YA TI HI

(Saz) UK SI MU BIL LA HI VE A YA TI HI

DER KU YI HA RA BAT ME RA ASK KE SAN KERD

HEY AN DIL BE RI AY YAR ME RA DI DU NI SAN KERD (Saz)

DOST MEN DER PE YI AN DIL BE RI AY YAR BI REF TEM

HEY O RU YI HOD AN LAH ZA ZI MEN BAZ NI HAN KERD (Saz)

DOST SUL TA NI A REF NAK BU DES MAH RE MI ES RAR

HEY AN SIR RI TE CEL LI I E ZEL CUM LE BE YAN

DÖRDÜNCÜ SELÂM

Evfer

KERD SUL TA NI ME Nİ

Nİ SUL TA NI ME Nİ

Nİ EN DER Dİ LÜ CAN

CAN İ MA NI ME Nİ

HAK DOST DER MEN Bİ DE Mİ

MEN ZİN DE ŞE VEM

YEK CAN Çİ ŞE VED

VED SAD CA NI ME Nİ

AH İ MA NI ME Nİ

SON PEŞREV

(Segâh Karabatak Peşrev)

Düyek

Hızır Ağa

The image displays a musical score for the piece "SON PEŞREV" (Segâh Karabatak Peşrev). The score is written for the Düyek instrument and is attributed to Hızır Ağa. It consists of 12 staves of music, all in a 2/4 time signature and a key signature of one sharp (F#). The notation includes various rhythmic patterns, such as eighth and sixteenth notes, and rests, characteristic of the Peşrev style. The score begins with a treble clef and a key signature of one sharp. The music is written in a single melodic line, with some staves featuring dynamic markings like 'f' (forte) and 'p' (piano). The piece concludes with a double bar line and a final chord.

SON YÜRÜK

Yürük Semâî

The image displays a musical score for the piece "Yürük Semâî" in the key of D major (one sharp) and 2/4 time. The score is written on a single staff and consists of 11 measures. The notation includes various rhythmic values such as eighth and sixteenth notes, as well as rests. The piece concludes with a double bar line in the final measure.