

MUHAYYERSÜNBLÜ PEŞREV

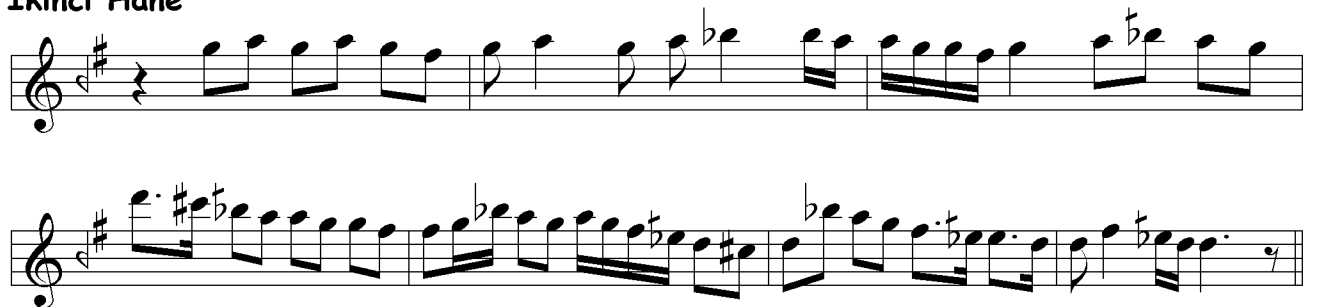
Devr-i Kebîr

Bekir Sıtkı Sezgin



Musical score for Devr-i Kebîr, featuring a treble clef, a key signature of one sharp (F#), and a 2/4 time signature. The score consists of 28 measures, with the first measure marked with a '28' above the staff. The melody is written in a single staff and includes various rhythmic patterns and accidentals. A section marked 'TESLİM' begins at measure 15, where the key signature changes to one flat (F) and the time signature changes to 2/4. The score concludes with a double bar line.

İkinci Hane



Musical score for İkinci Hane, featuring a treble clef, a key signature of one sharp (F#), and a 2/4 time signature. The score consists of two staves of music. The first staff begins with a measure rest followed by a series of eighth and sixteenth notes. The second staff continues the melody with similar rhythmic patterns and includes various accidentals. The score concludes with a double bar line.



Üçüncü Hane



Dördüncü Hane



MUHAYYERSÜNBÜLE MEVLEVÎ ÂYÎN-İ ŞERÎF'İ

www.heyzen.com

BİRİNCİ SELÂM

Bekir Sıtkı Sezgin

Devr-i Revan



AN HE ME GOF TİM LİK EN DER BE SİÇ
Bİ İ NA YA Tİ HU DA Hİ Çİ MU HİÇ
Bİ İ NA YA Tİ HA KU HA SA NI HAK
GER ME LEK BA ŞED Sİ YA HES TEŞ VE RAK



HEY Yİ HEY Yİ HEY RA NA YI MEN



HEY Yİ HEY Yİ HEY YAR Zİ BA YI MEN



HEY RA NA YI MEN CA NI MEN



YAR RA NA YI MEN HEY Yİ HEY HEY



YAR YAR CA NI MEN



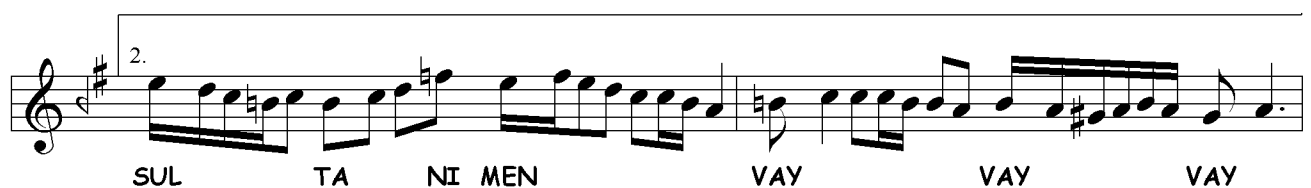
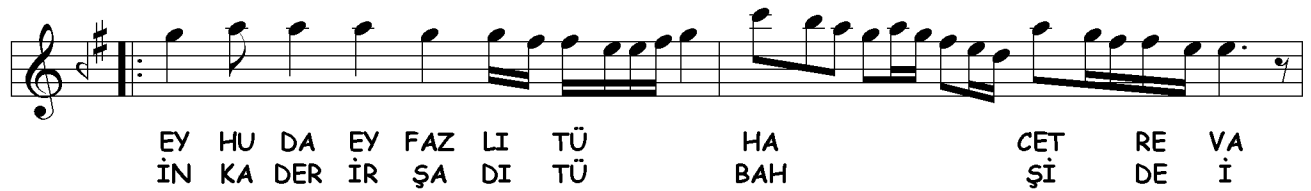
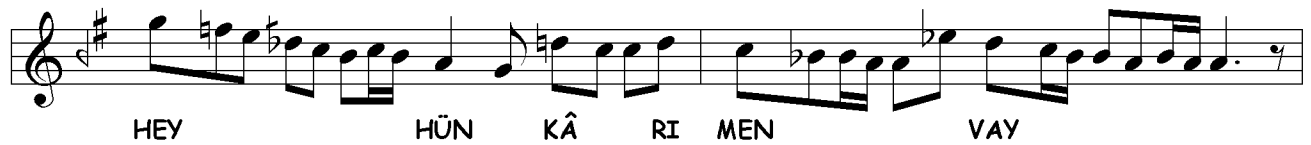
Mİ Rİ MEN CA NI MEN



DOST Zİ BA YI MEN HEY



HEY SUL TA NI MEN HEY HEY





İKİNCİ SELÂM

Evfer

AH KAT RE İ DA DA
AH KAT RE İ İL İL

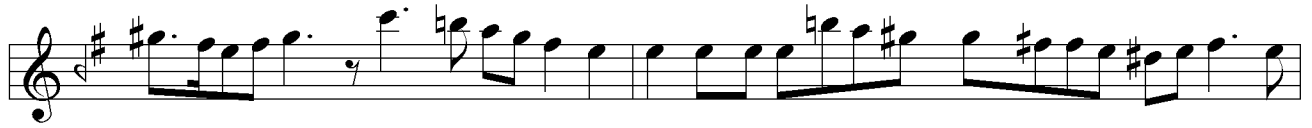
NİŞ MES Kİ BAH Şİ DER Şİ CA Şİ Dİ PİŞ
MES Tİ EN DER CA Nİ MEN

MUT VA TA SİL RE HA GER NEŞ DAN
VA RE HA NEŞ EZ

DAN EZ BE DER YA YA HA Yİ HİŞ
EZ HE VA VE VEZ HA Kİ TEN

AH AH HEY SUL TA Nİ MEN
AH HEY SUL TA Nİ MEN

MEN MEN HEY HÜN KÂ RI MEN
MEN HEY HÜN KÂ RI MEN



HEY RA NA YI MEN
HEY RA NA YI MEN



HEY Zİ BA YI MEN VAY
HEY Zİ BA YI MEN VAY



ÜÇÜNCÜ SELÂM

Devr-i Kebîr



PI ŞE ZAN KİN HAK HA HAS
KAT RE İ KÜ DER HE VA ŞÜD
GER DE RA YED DER A DEM YA



FEŞ KÜ NED BE Lİ YA Rİ MEN VAY
YA Kİ RİHT BE Lİ YA Rİ MEN VAY
SAD A DEM BE Lİ YA Rİ MEN VAY



PI ŞE ZAN Kİ BAD HA NES
EZ HA Zİ NE KUD RE Tİ TÜ
ÇÜN Bİ HA Nİ ŞU KÜ NED EZ



FEŞ KÜ NED BE Lİ YA Rİ MEN VAY
KEY Gİ RİHT BE Lİ YA Rİ MEN VAY
SER KA DEM BE Lİ BE Lİ YA Rİ





HUSRE VÜ HA KANOLUR
BAY İ SE SUL TANOLUR

HUSRE VÜ HA KAN OLUR
BAY İ SE SUL TAN OLUR

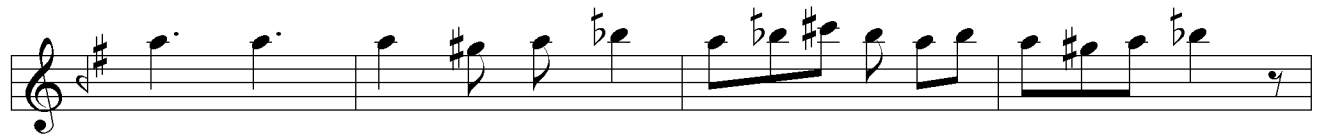


SAD HE ZA RAN ZID DI ZID RA Mİ KÜ ŞED
HAS SA HER ŞEB CÜM LE EF KÂ Rİ U KUL



BAZ ŞAN FAZ LI TÜ Bİ RUN Mİ KE ŞED
GARK Mİ KER DEN Dİ DER BAH Rİ NÜ GUL





BAZ VAK TI SUBH AN AL LA HI YAN



BER ZE NEND EZ BAHR SER ÇÜN MA HI YAN



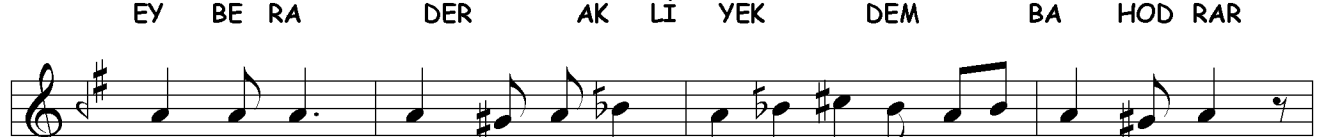
DER HA ZAN AN SAD HE ZA RAN ŞA HU BERG



DER HE Zİ MET REF TE EZ DER YA YI MERG



EY BE RA DER AK Lİ YEK DEM BA HOD RAR



DEM BE DEM DER TU HA ZA NES TÜ BE HAR



BA



Ğİ DİL RA SEB ZU TER RU TA ZE BİN PÜR



Zİ GÜN CE VER DÜ SER VÜ YA SE MİN İN



SÜ HAN HAY Yİ Kİ EZ AK Lİ KÜL LEST BU



Yİ AN GÜL ZA RU SER VÜ SÜN BÜ LEST NAZ

RA RU Yİ Bİ BA YED HEM ÇÜ VERD ÇÜN
NE DA Rİ GER Dİ BED HU Yİ ME GERD ZİŞT
BA ŞED RU Yİ MA Zİ BA VU ZERD SAHT
BA ŞED ÇEŞ Mİ NA Bİ NA VÜ DERD
EZ
BA HA RAN KEY ŞE VED SER SEBZ SENG HAK
ŞEV TA GÜL Bİ RU YED RENG RENG SAL
HA TÜ SENG BU Dİ DİL HI RAŞ A
ZÜ NUN KÜN YEK ZA MA Nİ HAK

DÖRDÜNCÜ SELÂM

Evfer



BAŞ SUL TA Nİ ME Nİ
AH DER MEN Bİ DE Mİ



AH SUL TA Nİ ME Nİ A
AH MEN ZİN DE ŞE VEM A



MAN EN DER AH Dİ LÜ CAN
MAN YEK CAN A Çİ ŞE VED



CAN İ MA Nİ ME Nİ
VED SAD CA Nİ ME Nİ

SON PEŞREV

Düyek

Musical score for SON PEŞREV, Düyek. The score consists of six staves of music in 2/4 time, key of D major. The melody is written in a single voice on a treble clef. The first staff starts with a treble clef, a key signature of one sharp (F#), and a 2/4 time signature. The music features a series of eighth and sixteenth notes, with some rests and a final quarter note. The second staff continues the melody with similar rhythmic patterns. The third staff shows a change in the melody with some notes marked with a flat (b). The fourth staff continues with more complex rhythmic patterns. The fifth staff shows a change in the melody with some notes marked with a flat (b). The sixth staff concludes the piece with a final cadence and a double bar line.

SON YÜRÜK

Yürük Semâî

Musical score for SON YÜRÜK, Yürük Semâî. The score consists of six staves of music in 2/4 time, key of D major. The melody is written in a single voice on a treble clef. The first staff starts with a treble clef, a key signature of one sharp (F#), and a 2/4 time signature. The music features a series of eighth and sixteenth notes, with some rests and a final quarter note. The second staff continues the melody with similar rhythmic patterns. The third staff shows a change in the melody with some notes marked with a flat (b). The fourth staff continues with more complex rhythmic patterns. The fifth staff shows a change in the melody with some notes marked with a flat (b). The sixth staff concludes the piece with a final cadence and a double bar line.