

SEGÂH PEŞREV

Devr-i Kebîr

Nâyî Osman Dede

Musical notation for the first section of the Segâh Peşrev, consisting of five staves of music in 2/4 time with a key signature of one sharp (F#). The notation includes various rhythmic patterns and melodic lines.

TESLİM

Musical notation for the second section of the Segâh Peşrev, consisting of five staves of music in 2/4 time with a key signature of one sharp (F#). The notation includes various rhythmic patterns and melodic lines.

İkinci Hane

Musical notation for the third section of the Segâh Peşrev, consisting of two staves of music in 2/4 time with a key signature of one sharp (F#). The notation includes various rhythmic patterns and melodic lines.

Three staves of musical notation in 2/4 time, key signature of one sharp (F#). The first staff begins with a treble clef and a 2/4 time signature. The music consists of various rhythmic patterns and melodic lines, including eighth and sixteenth notes, and rests. The second staff continues the melody with similar rhythmic patterns. The third staff concludes the section with a double bar line and a repeat sign (§).

Üçüncü Hane

Six staves of musical notation in 2/4 time, key signature of one sharp (F#). The notation is dense with rhythmic patterns, featuring many sixteenth and thirty-second notes. The first staff starts with a treble clef and a 2/4 time signature. The music continues through five more staves, ending with a double bar line and a repeat sign (§).

Dördüncü Hane

Five staves of musical notation in 2/4 time, key signature of one sharp (F#). The notation continues with complex rhythmic patterns. The first staff starts with a treble clef and a 2/4 time signature. The music continues through four more staves, ending with a double bar line and a repeat sign (§).

MÂYE MEVLEVÎ ÂYÎN-I ŞERÎF'I

BİRİNCİ SELÂM

Devr-i Revân

Zekât Dede



EY YU SÜ Fİ MEH RU YAN (Saz) EY CA
EY ÇEH RE İ TÛ MEH VEŞ A BES
EY SÜ RE Tİ LUT Fİ HAK NAK Şİ
TEB Rİ Zİ Bİ GÜ A HİR BA GAM



HÜ CE MA LET HOŞ (Saz) EY HUS RE VÛ EY Şİ
TÛ DE RU A TEŞ HEM A TE Şİ TÛ NA
TÛ HO ŞEST EL HAK EY NAK Şİ TÛ RU HA
ZE İ ŞEM Sİ DİN KEY FIT NE İ CA DÛ



RİN EY NAK ŞÛ HA YA LET HOŞ
DİR HEM A Bİ ZÛ LÂ LET HOŞ
Nİ VEY NU Rİ CE LÂ LET HOŞ
YAN EY SİH Rİ HA LÂ LET HOŞ



Dİ DEM SE HER AN ŞA HI RA (Saz)
DER HA Bİ GAF LE Tİ Bİ HA BER



BER ŞA HI RA HI HEL E TA (Saz)
ZU BÛL A Lİ VÛ BÛL A LÂ



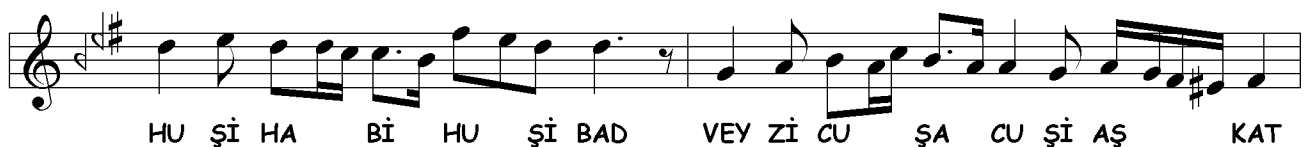
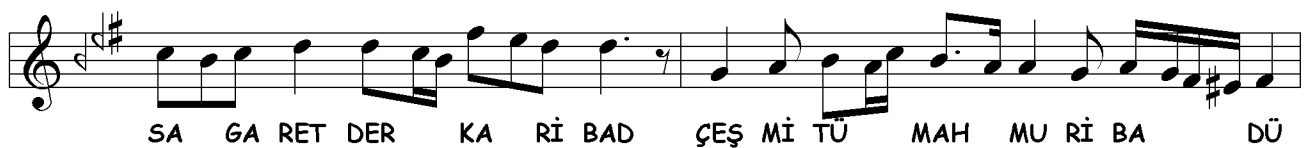
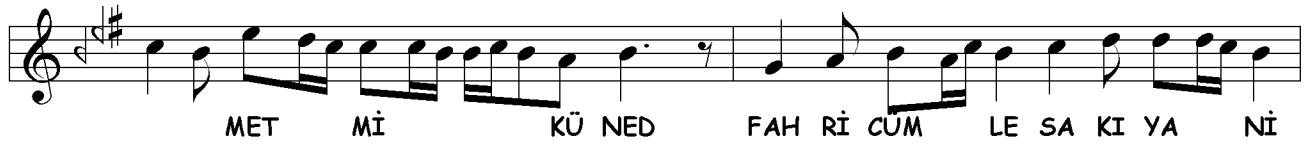
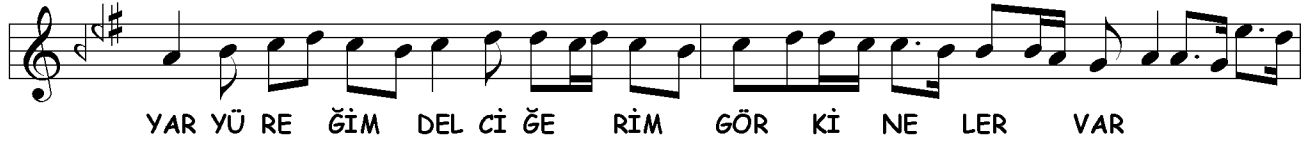
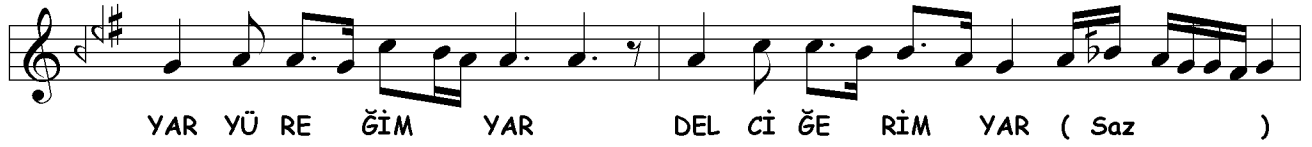
ZAN MEY Kİ DER SER DAŞ TEM (Saz)



MEN SA GA Rİ BER DAŞ TEM (Saz)




DER Pİ Şİ O Mİ DAŞ TEM (Saz)







CAN İ MA NI ME Nİ




AH DER MEN Bİ DE Mİ




AH MEN ZİN DE ŞE VED



AH YEK CAN Çİ ŞE VED



VED SAD CA NI ME Nİ



AH İ MA NI ME Nİ



28



EY Kİ HE ZAR A FERİN DOST DOST BU Nİ CE SUL TAN O LUR
HER Kİ BU GÜN VE LE DE DOST DOST İ NA NUBEN YÜZ SÜ RE



(Saz) KU LI O LAN Kİ Şİ LER CA NIM HUS RE VÜ HA
YOK SUL İ SE BAY O LUR CA NIM BAY İ SE SUL



KAN O LUR HUS RE VÜ HA KAN O LUR (Saz)
TAN O LUR BAY İ SE SUL TAN O LUR



EY KAVM BE HAC REF TE KÜ CA YİD KÜ CA YİD (Saz)



MA ŞUK HE MİN CAST Bİ YA YİD Bİ YA YİD (Saz)



MA ŞUK HE MİN CAST Bİ YA YİD Bİ YA YİD (Saz)



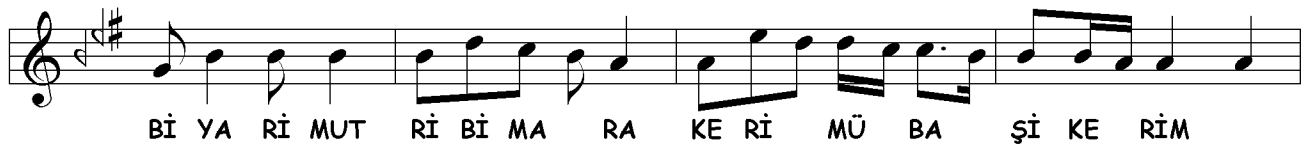
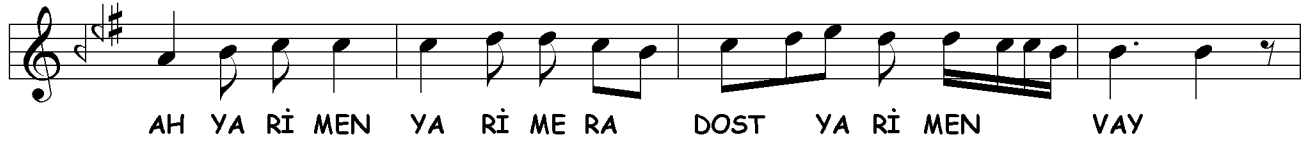
GER SU RE Tİ Bİ SU RE Tİ MA ŞU KI Bİ Bİ NİD



GER SU RE Tİ Bİ SU RE Tİ MA ŞU KI Bİ Bİ NİD (Saz)



HEM HA CE VÜ HEM HA NE VÜ HEM KÂ BE ŞÜ MA YİD (Saz)





Dİ LEM ÇÜ A TE Şİ ÇÜN DER DE Mİ ŞE VED ZİN DE



Dİ LEM ÇÜ A TE Şİ ÇÜN DER DE Mİ ŞE VED ZİN DE



ÇÜ DİL ME BA Şİ MÜ SA FIR MU KÎ MÜ BA Şİ MU KÎM



ÇÜ DİL ME BA Şİ MÜ SA FIR MU KÎ MÜ BA Şİ MU KÎM



AH HEY HEY NE A CA YİB BE ZE MİŞ HÜS Nİ LE BA
AH HEY HEY NE DİR OL HA Lİ MU AN BER RU Hİ EN



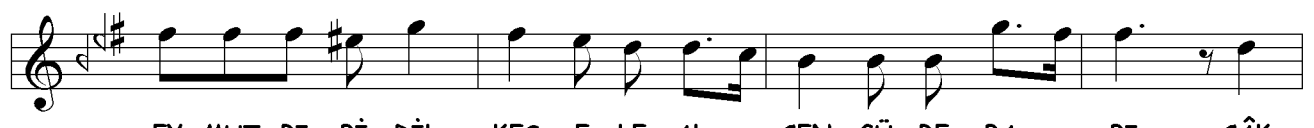
Rİ BU SU RE Tİ YA Rİ BU NAK ŞÜ Nİ GÂ RI AH
VER OL SA KI İ KEV SER OL RÛ Hİ MU SAV VER AH



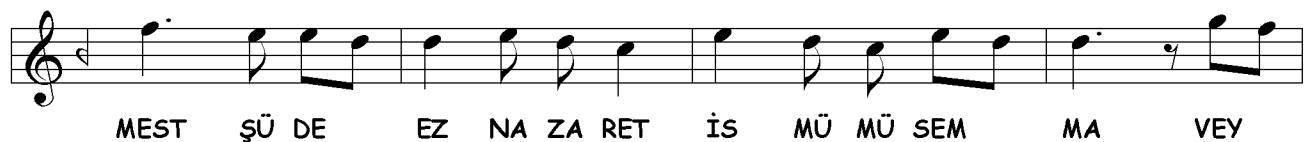
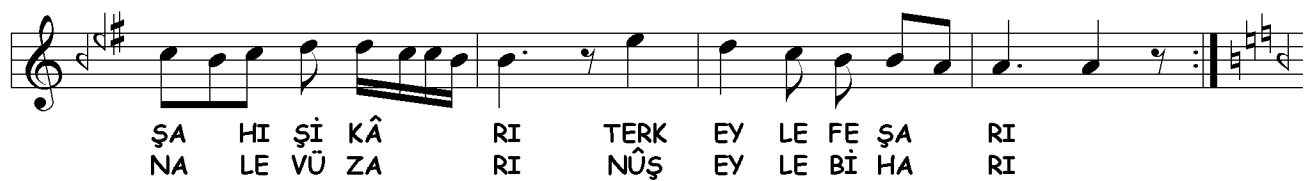
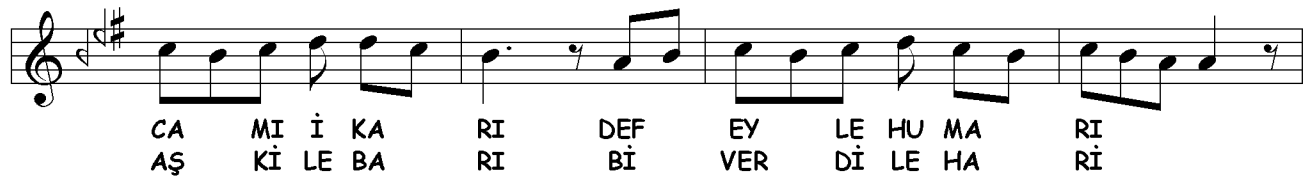
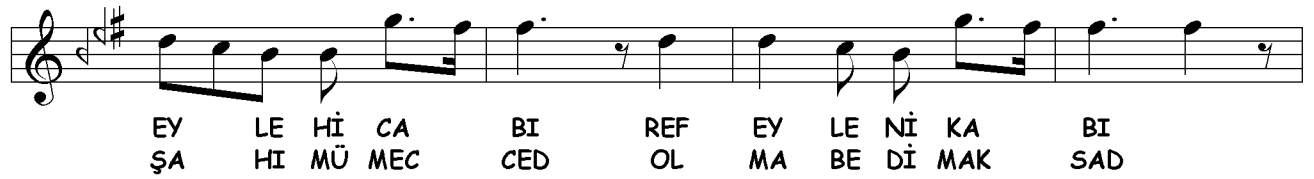
HİR EH Lİ NA ZAR KİM GÖ RE TAH SİN O LA KÂ RI BU
SEY RET Nİ CE CEM EY LE MİŞ OL NÛ Rİ LE NA RI Zİ



ÇEŞ MÜ İ ZA RI KAL MA YA KA RA RI AH
SAN A Tİ CA Rİ Zİ KUD RE Tİ BA Rİ AH



EY MUT RI Bİ DİL KEŞ E LE AL ÇEN GÜ RE BA BI ÇÂK
UŞ ŞA KI KA TAR EY LE Dİ AŞK İÇ RE MU HAM MED OL





TU Tİ İ CAN GEŞ TE Zİ LEB HA Yİ ŞE KER HA İN
 MEH Zİ KÜ CA BA ŞE DÜ İN RÛ Yİ Çİ RÛ YEST İN
 NÛ Rİ HU DA YEST TE BA REK VE TE A LÂ

DÖRDÜNCÜ SELÂM

Evfer



SUL TA NI ME Nİ
 AH AH SUL MEN TA ZİN NI DE ME Nİ ŞE VEM
 AH AH EN YEK DER CAN Dİ Çİ LÜ CAN ŞE VED
 CAN VED İ SAD MA CA NI NI ME Nİ ME Nİ
 AH AH DER İ MEN MA Bİ NI DE Mİ ME Nİ

SON PEŞREV

Düyek

Musical notation for SON PEŞREV, Düyek. The piece is written in 2/4 time with a key signature of one sharp (F#). It consists of six staves of music. The first staff begins with a treble clef, a key signature of one sharp, and a 2/4 time signature. The music is a single melodic line for the ney. The notation includes various rhythmic values such as eighth and sixteenth notes, and rests. The piece concludes with a double bar line and a final cadence symbol.

SON YÜRÜK

Yürük Semâî

Musical notation for SON YÜRÜK, Yürük Semâî. The piece is written in 2/4 time with a key signature of one sharp (F#). It consists of four staves of music. The first staff begins with a treble clef, a key signature of one sharp, and a 2/4 time signature. The music is a single melodic line for the ney. The notation includes various rhythmic values such as eighth and sixteenth notes, and rests. The piece concludes with a double bar line and a final cadence symbol.