

# FERAHNÂK PEŞREV

## Devr-i Kebîr



Musical notation for the first section, Devr-i Kebîr. It consists of three staves of music in G major (one sharp) and 28/4 time. The notation includes various rhythmic values and melodic lines.

## TESLİM



Musical notation for the second section, TESLİM. It consists of three staves of music in G major (one sharp). The notation includes various rhythmic values and melodic lines.

## İkinci Hane



Musical notation for the third section, İkinci Hane. It consists of three staves of music in G major (one sharp). The notation includes various rhythmic values and melodic lines, ending with a double bar line and a fermata symbol.

### Üçüncü Hane



Musical notation for Üçüncü Hane, consisting of three staves. The first staff begins with a treble clef, a key signature of two sharps (F# and C#), and a common time signature. The melody is written in a series of eighth and sixteenth notes, with some beamed sixteenth notes. The second staff continues the melody, featuring a fermata over a half note. The third staff concludes the piece with a double bar line and a repeat sign.

### Dördüncü Hane



Musical notation for Dördüncü Hane, consisting of three staves. The first staff begins with a treble clef, a key signature of two sharps (F# and C#), and a common time signature. The melody is written in a series of eighth and sixteenth notes, with some beamed sixteenth notes. The second staff continues the melody, featuring a fermata over a half note. The third staff concludes the piece with a double bar line and a repeat sign.

# FERAHNÂK MEVLEVÎ ÂYÎN-İ ŞERÎF'İ

## BİRİNCİ SELÂM

Devr-i Revân

Sermüezzîn Rif'at Bey





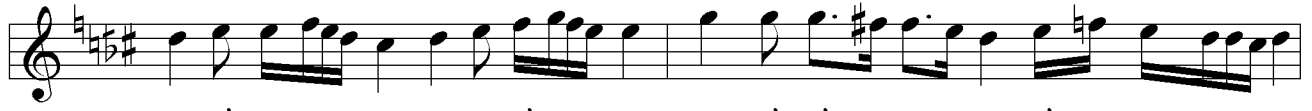
Mİ RA CI HI RED MEN Dİ HEY Yİ HEY YAR



TA RİF NE Mİ BA YED ÇÜN CÜM LE TÜ Yİ TA YİN



HEY Yİ HEY YAR Pİ Rİ MEN



DU Şİ DER MEHTA BI Dİ DEM MEC Lİ Sİ EZ DU Rİ MEST



HEY YAR TIF LI MES TÜ Pİ Rİ MES TÜ



MUT Rİ Bİ TAN BU Rİ MEST HEY Yİ HEY YAR



Pİ Rİ MEN MA Hİ DA DE A SÜ MAN RA



CÜR A İ ZAN CA MI MEY HEY Yİ HEY YAR



MA Hİ MES TÜ MİH Rİ MES TÜ SA YE MES TÜ NU Rİ MEST



HEY Yİ HEY YAR Pİ Rİ MEN



MAH BU Bİ MEN MER GU Bİ MEN



MAT LU Bİ MEN YA Rİ HEY MAK BU Lİ MEN

# İKİNCİ SELÂM

Evfer

AH AH BA HAR A MED SEB  
AH HO ŞU SER SEB

AH SEB BA Zİ HAR ŞÜD A A MED LEM

MED LEM BA E HA VA HA VA RI HOŞ NI LÂ

HOŞ LÂ İ LE ZAR ZAR A A MED MED

AH zi sÛ SEN BIŞ

NEV EY REY HAN

Kİ sÛ SEN DEH

ZE BAN DA RED

AH BE DEŞ Tİ A

A BU GİL BİN GER

Kİ PÜR NAK ŞU

ŞU Nİ GÂR A MED

## ÜÇÜNCÜ SELÂM

### Devr-i Kebîr

A ŞIK ŞÛ DE İ EY CAN  
SEV DAT MÛ BA REK BAD  
EZ KEV NÛ ME KÂN RES Tİ  
AN CAT MÛ BA REK BAD  
EZ HER DÛ Cİ HAN BİĞ ZER

TEN HA ZE NÜ TEN HA HOR

TA MÜL KÜ ME LEK GÜ YED

TEN HAT MÜ BA REK BAD

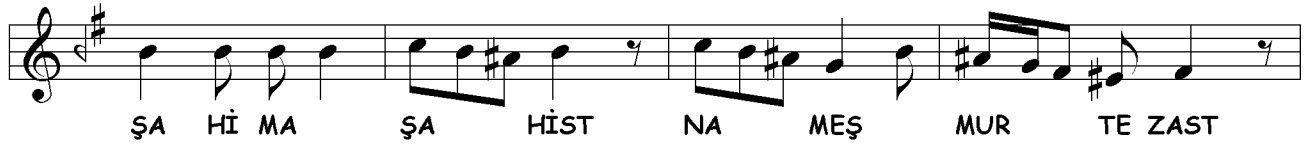
EY Kİ HE ZAR A FE RİN AH BU Nİ CE SUL TAN O LUR  
HER Kİ BU GÜN VE LE DE AH İ NA NU BEN YÜZ SÜ RE

KU LI O LAN Kİ Şİ LER CA NİM HUS RE VÜ HA  
YOK SUL İ SE BAY O LUR CA NİM BAY İ SE SUL

KAN O LUR TAN O LUR HUS RE VÜ HA KAN O LUR  
BAY İ SE SUL TAN O LUR

2.

2.





ŞE Nİ Dİ TAB LI BER KEŞ ZUD ŞEM ŞİR  
 Kİ CA Nİ TŪ GI LÂ FI ZŪL Fİ KÂ REST  
 HŪ SEY Nİ KER BE LÂ Yİ AB BİG ZAR  
 Kİ A BI İM RŪZ TÎ Gİ AB DA REST  
 FE DA KŪN CA Nİ TŪ ŞEM Sİ Dİ Nİ TEB RİZ  
 E GER CA Nİ TŪ EZ HAK KÂ MI KÂ REST

## DÖRDÜNCÜ SELÂM

## Evfer

AH AH SUL DER TA MEN Nİ Bİ ME Nİ DE Mİ  
 Nİ Mİ SUL MEN TA ZİN Nİ DE ME Nİ ŞE VEM  
 AH AH EN YEK DER CAN Dİ Çİ LŪ CAN ŞE VED  
 CAN VED İ SAD MA CA Nİ Nİ ME Nİ ME Nİ

## SON PEŞREV

Düyek

The musical score for SON PEŞREV is written in G major (one sharp) and 2/4 time. It consists of eight staves of music. The first staff begins with a treble clef, a key signature of one sharp (F#), and a common time signature (C). The music is a single melodic line. The second staff continues the melody. The third staff continues the melody. The fourth staff features a triplet of eighth notes marked with a bracket and the number '3'. The fifth staff continues the melody. The sixth staff continues the melody. The seventh staff continues the melody. The eighth staff concludes the piece with a double bar line and a final chord.

## SON YÜRÜK

Yürük Semâî

The musical score for SON YÜRÜK is written in G major (one sharp) and 2/4 time. It consists of two staves of music. The first staff begins with a treble clef, a key signature of one sharp (F#), and a common time signature (C). The music is a single melodic line. The second staff continues the melody and concludes with a double bar line and a final chord.

