

DÜĞÂH PEŞREV

Devr-i Kebîr

Hüseyin Fahreddin Dede

Musical notation for the first part of the piece, starting with a treble clef, a key signature of one flat, and a 2/8 time signature. The notation consists of five staves of music.

TESLİM

Musical notation for the second part of the piece, starting with a treble clef, a key signature of one flat, and a 2/8 time signature. The notation consists of three staves of music, with labels '2. Haneye', '3. Haneye', and '4. Haneye' indicating specific measures. The piece ends with 'K A R A R' and 'SON'.

İkinci Hane

Musical notation for the third part of the piece, starting with a treble clef, a key signature of one flat, and a 2/8 time signature. The notation consists of three staves of music.

The first two staves of the first section are written in treble clef with a key signature of one flat (B-flat) and a 2/4 time signature. The first staff contains a melodic line with eighth and sixteenth notes, including a sharp sign (F#) on the second staff. The second staff continues the melody with a repeat sign at the end.

Üçüncü Hane

The third section, labeled 'Üçüncü Hane', consists of six staves. It begins with a treble clef, one flat key signature, and a 2/4 time signature. The first staff starts with a quarter rest followed by a series of eighth notes. The subsequent staves feature more complex rhythmic patterns with sixteenth and thirty-second notes. The section concludes with a repeat sign on the sixth staff.

Dördüncü Hane

The fourth section, labeled 'Dördüncü Hane', consists of five staves. It begins with a treble clef, one flat key signature, and a 2/4 time signature. The first staff starts with a quarter rest followed by a series of eighth notes. The subsequent staves feature more complex rhythmic patterns with sixteenth and thirty-second notes. The section concludes with a repeat sign on the fifth staff.

DÜĞÂH MEVLEVÎ ÂYÎN-I ŞERÎF'İ

Ağır Düyek

Mehmed Celâleddin Dede

YA MEN Lİ VA Ü AŞ KI KE LA ZA
LE A Lİ YA (Saz) YA Rİ HEY SUL TA NI MEN
VAY (Saz) KAD HA BE MEN YE KÜ
NÜ Mİ NEL AŞ KI HA Lİ YA (Saz) YA Rİ HEY SUL
TA NI MEN VAY (Saz) NA DA
NE Sİ MÜ AŞ KI KE Fİ EN FÜ SİL VE RA (Saz)
YA Rİ HEY SUL TA NI MEN VAY (Saz)
AH YA KÜ MU CE LA Lİ YE CEL LE
CE LA LE NA (Saz)) YA Rİ HEY SUL TA NI MEN
VAY HÜN KÂ RI MEN DOST RA
NA YI MEN VAY HEY HEY HE Yİ HEY

HE Yİ SUL TA NI MEN VAY (Saz)

KUR RE TŪL AY NI ME Nİ EZ CAN BE Lİ (Saz)

YA Rİ YAR MA HI BED Rİ GİRDİ MA GER

DAN BE Lİ (Saz) SAD HE ZA RAN A FE RİN BER

RU Yİ TŪ () YA Rİ YAR Mİ Fİ RİS TED

HU Rİ VŪ RID VAN BE Lİ) YA Rİ YAR

SAM TŪ CU U SE HE RŪ UZ LE TŪ ZİK Rİ

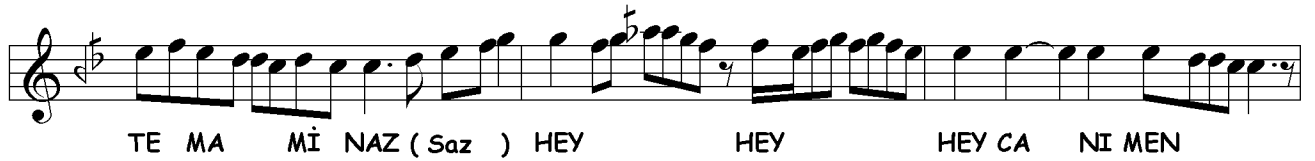
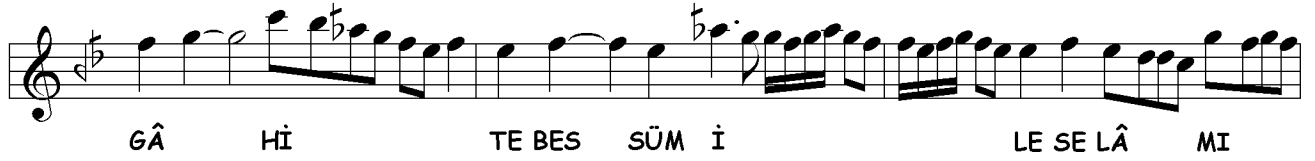
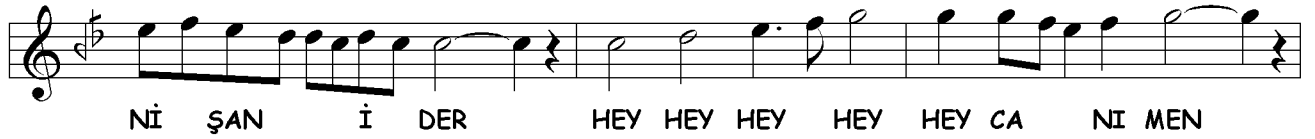
BE DE VAM YAR MU RA DI MEN

NA TE MA MA NI Cİ HAN RA Bİ KŪ NED KÂ

Rİ TE MAM YAR MU RA DI MEN (

) AS LI İN CŪM LE KE MA LAT BE CŪZ MŪR

Şİ Dİ NİST (Saz) YA Rİ YAR MU RA DI MEN (Saz)



A SI NA Dİ DE BAN İ DER HEY HEY HEY Yİ HEY

HEY CA NI MEN DA DEN DEM ME ZEL AH

SEC DE BE Rİ Rİ RU Yİ SA NEM

RA AH HEY Yİ HEY HEY MAK BU Lİ MEN

BER BA Mİ FE LEK AH BÜR DEM E

ZAN RU Yİ A LEM RA AH

HEY Yİ HEY HEY MAK BU Lİ MEN AH MU CİZ Bİ NÜ

MA EZ LE Bİ LÂ LÂ

LE Tİ ÇÜ ME Sİ HA AH HEY Yİ HEY Yİ HEY

MAK BU Lİ MEN TA ZİN DE KÜ Nİ AH

MÜR DE İ SAD SA LE İ GAM

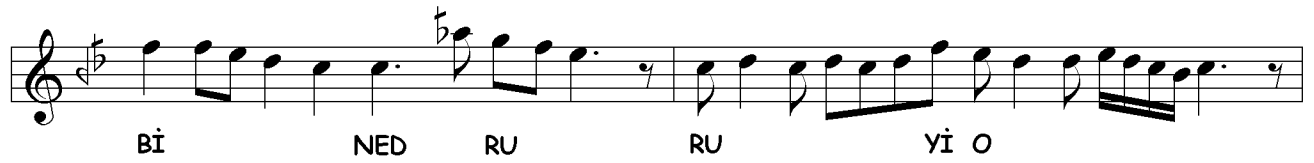
RA AH HEY Yİ HEY HEY MAK BU Lİ MEN HEY

SUL TA NI MEN HÜN KÂ RI MEN YAR İH
 SAN ME DED GUF RAN ME DED YAR
 HEY Yİ HEY HEY Yİ HEY HEY SUL TA NI MEN

İKİNCİ SELÂM

Evfer

VAY SUL TA NI ME NI
 AH SUL TA NI ME Nİ
 (Saz) EN DER Dİ LÜ CAN
 CAN İ MA NI ME NI
 AH DER MEN BÎ DE MI
 AH MEN ZİN DE ŞE VEM
 (Saz) YEK CAN Çİ ŞE VED
 VED SAD CA NI ME NI

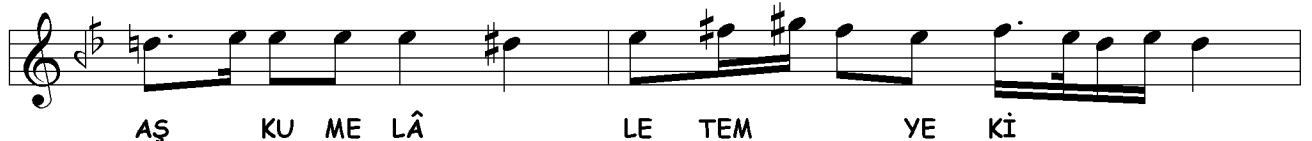
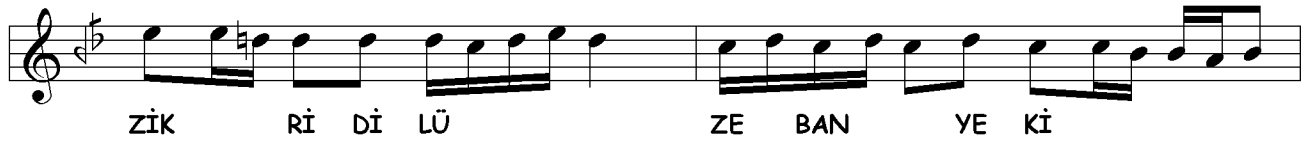
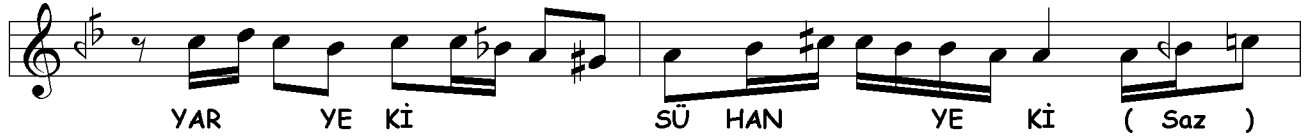
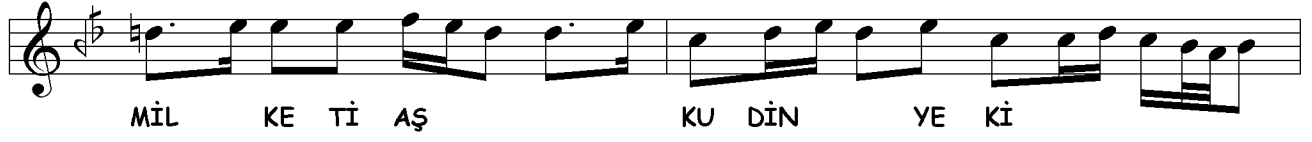


ZED BER CA NI MEN
 (Saz) SAD RAH ME TŪ
 TŪ SAD A A FE RİN
 BER DES TŪ BER
 BA ZU ZU Yİ O
 AH ZA LIM YAR
 AH Mİ RİM

ÜÇÜNCÜ SELÂM

Düyek

HŪ SŪN YE Kİ HA SEN YE Kİ
 YAR YE Kİ SŪ HAN YE Kİ (Saz)
 RUH YE Kİ BE DEN YE Kİ
 YAR YE Kİ SŪ HAN YE Kİ (Saz)





TAN O LUR
YÜZ SÜ RE

KU LI O LAN Kİ Şİ LER
YOK SUL İ SE BAY O LUR



CA NİM HÜS RE VÜ HA KAN O LUR
CA NİM BAY İ SE SUL TAN O LUR



GU



Şİ Kİ BE HAK BAZ BÜ VED DER HE ME CAY O



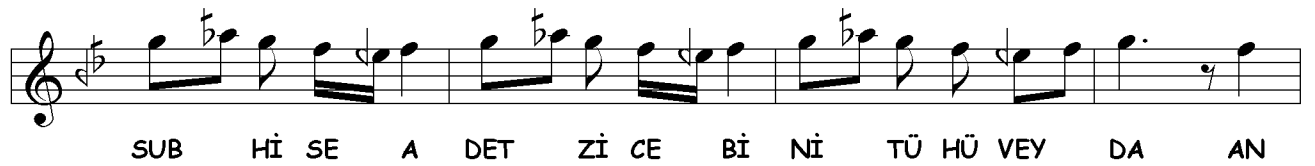
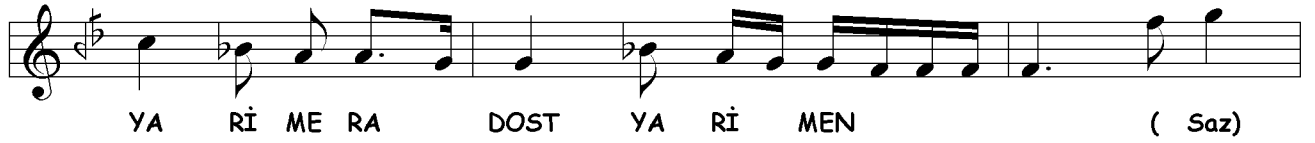
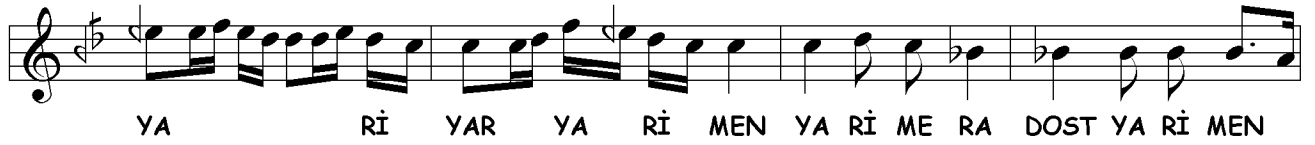
HİÇ SÜ HEN NEŞ NE VE DİL LÂ BE HU DA VAY VAN



Dİ DE KEZ O NU Rİ PE Zİ RED O RA HER



ZER RE BÜ VED A Yİ NE İ DOST NÜ MA VAY YA Rİ MEN



MEN ME NE MÜ Nİ TÛ TÛ Yİ Nİ TÛ ME Nİ VAY HEM

MEN ME NE MÜ HEM TÛ TÛ Yİ HEM TÛ ME Nİ VAY (Saz)

AH Bİ REFT YA Rİ ME NÜ YA Dİ GÂ Rİ MAN

Dİ ME RA RU Hİ MU AS FE RÛ ÇEŞ Mİ PÛ RA BÛ VA

E SE FA AH Çİ RAS TI VA E SE FA GÛ

Yİ ZAN Kİ YA KU BEST Zİ YU SÛ Fİ KE Şİ MEH RU

Yİ Hİ Şİ GEŞ TE CÛ DA AH E LES Tİ AŞ

KI RE Sİ DÛ HER AN Kİ GÛF Tİ BE LÂ GÛ VA Hİ GÛF

Tİ BE LÂ HES Tİ SAD HE ZA Rİ BE LÂ AH YA

RAB HA RE Mİ HAZ RE Tİ NE RA HI BA ĞİŞ LA YA DER Dİ LE BİR

A HI SE HER GÂ HI BA ĞIŞ LA AL DIN Dİ Lİ GÜM RA HI MI KOY
DUN BE Nİ Bİ DİL BA Rİ YE Rİ NE BİR Dİ Lİ A GÂ HI BA ĞIŞ

DÖRDÜNCÜ SELÂM

Evfer

LA SUL TA NI ME Nİ
AH SUL TA NI ME Nİ
EN DER Dİ LÜ CAN
CAN İ MA NI ME Nİ
AH DER Bİ DE Mİ
AH MEN ZİN DE ŞE VEM
YEK CAN Çİ ŞE VED
VED SAD CA NI ME Nİ
AH İ MA NI ME Nİ

SON PEŞREV

Düyek

Musical score for SON PEŞREV, Düyek. The score consists of seven staves of music in 2/4 time, featuring a key signature of one flat (B-flat). The melody is written in a single voice on a treble clef staff. The music is characterized by a mix of eighth and sixteenth notes, with some rests and a final double bar line with repeat dots.

SON YÜRÜK

Yürük Semâî

Musical score for SON YÜRÜK, Yürük Semâî. The score consists of three staves of music in 2/4 time, featuring a key signature of one flat (B-flat). The melody is written in a single voice on a treble clef staff. The music is characterized by a mix of eighth and sixteenth notes, with some rests and a final double bar line with repeat dots.