

BÛSELİK PEŞREV

Devr-i Kebîr

Bolâhenk Nûri Bey

The first part of the piece, Devr-i Kebîr, is written in 2/4 time and consists of five staves of music. The notation is in treble clef and features a variety of rhythmic patterns, including eighth and sixteenth notes, and rests. The key signature is one flat (B-flat).

The second part of the piece, TESLİM, is written in 2/4 time and consists of two staves of music. The notation is in treble clef and features a variety of rhythmic patterns, including eighth and sixteenth notes, and rests. The key signature is one flat (B-flat).

İkinci Hane

The third part of the piece, İkinci Hane, is written in 2/4 time and consists of five staves of music. The notation is in treble clef and features a variety of rhythmic patterns, including eighth and sixteenth notes, and rests. The key signature is one flat (B-flat).

Üçüncü Hane



Musical notation for Üçüncü Hane, consisting of eight staves of music. The notation includes various notes, rests, and accidentals (sharps and flats) across the staves. The piece concludes with a double bar line and a fermata symbol.

Dördüncü Hane



Musical notation for Dördüncü Hane, consisting of five staves of music. The notation includes various notes, rests, and accidentals (sharps and flats) across the staves. The piece concludes with a double bar line and a fermata symbol.

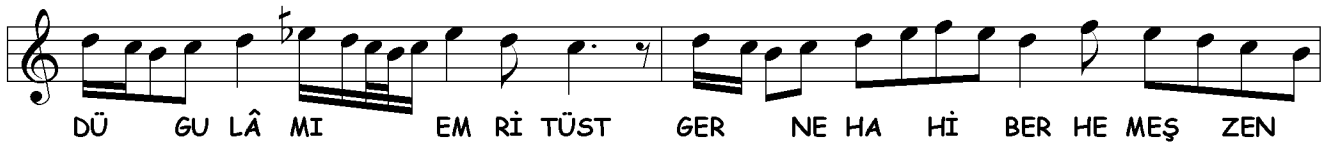
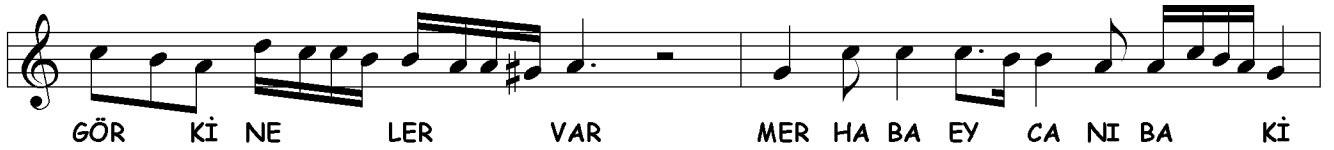
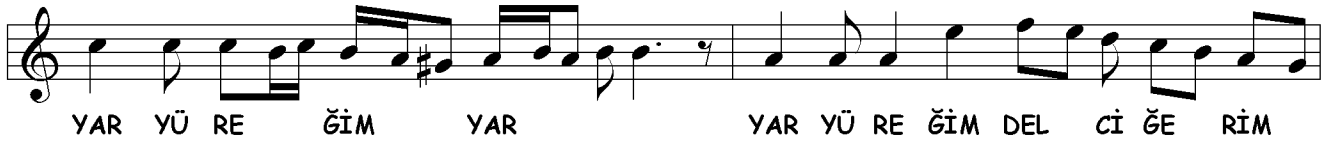
BÛSELİK MEVLEVÎ ÂYÎN-İ ŞERÎF'İ

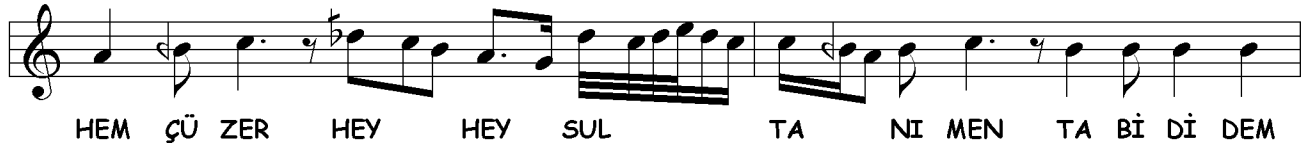
BİRİNCİ SELÂM

Devr-i Revân

Bolâhenk Nûri Bey

AN SUB Hİ SE A DET HA ÇÜN NU
Rİ FE ŞAN A YED HEY Yİ YAR HEY Yİ DOST
Pİ Rİ MEN SUL TA NI MEN (Saz) VAN GÂ Hİ HU RU Sİ
CAN DER BAN GÜ Fİ GAN A YED
HEY Yİ YAR HEY Yİ DOST Pİ Rİ MEN SUL TA NI MEN (Saz)
MİS KİN Dİ Lİ A VA RE AN GÛM
ŞÜ DE YEK BA RE HEY Yİ YAR HEY Yİ DOST
Pİ Rİ MEN SUL TA NI MEN ÇÜN BİŞ NE VED İN ÇA
RE HOŞ RAK Sİ KÛ NAN A YED
HEY Yİ YAR HEY Yİ DOST Pİ Rİ MEN SUL TA NI MEN





İKİNCİ SELÂM

Evfer

MEN SUL TA NI ME Nİ

Nİ SUL TA NI ME Nİ

AH EN DER Dİ LÜ CAN

CAN İ MA NI ME Nİ

AH DER MEN Bİ DE Mİ

MEN ZİN DE ŞE VEM

VEM YEK CAN Çİ ŞE VED

VED SAD CA NI ME Nİ

AH İ MA NI ME Nİ



ÜÇÜNCÜ SELÂM

Devr-i Kebîr

EY Cİ HAN RA DİL GÜ ŞA İK

BA Lİ AŞK BE Lİ YA Rİ MEN

YEF' A LUL LAH MA YE ŞA İK

BA Lİ AŞK BE Lİ YA Rİ MEN (Saz)

EY SA FA VÜ EY VE FA DER

CEV Rİ AŞK BE Lİ YA Rİ MEN

EY HO ŞA VÜ EY HO ŞA İK

BA Lİ AŞK HEY Yİ HEY YA Rİ MEN



EY Kİ HE ZAR A FE RİN CA NİM BU Nİ CE SUL TAN O LUR
HER Kİ BU GÜN VE LE DE CA NİM İ NA NU BEN YÜZ SÜ RE



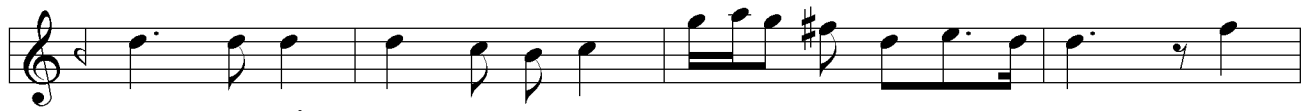
KU LI O LAN Kİ Şİ LER CA NİM HUS RE VÜ HA
YOK SUL İ SE BAY O LUR CA NİM BAY İ SE SUL



KAN O LUR YAR HUS RE VÜ HA KAN O LUR
TAN O LUR YAR BAY İ SE SUL TAN O LUR



İM



RUZ Nİ GÂ RES TŪ SE MA AS TŪ SU RA Hİ YEK



SA Kİ İ SER MES TŪ YE Kİ CEM İ MŪ BA Hİ CŪZ



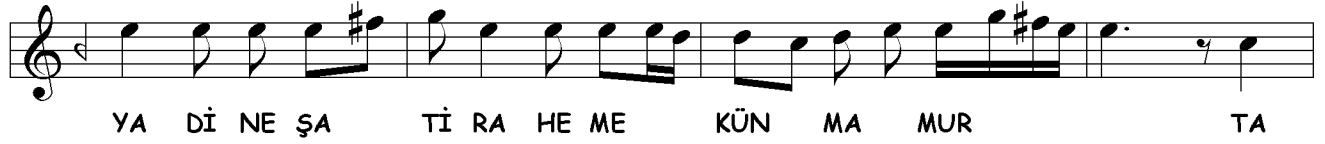
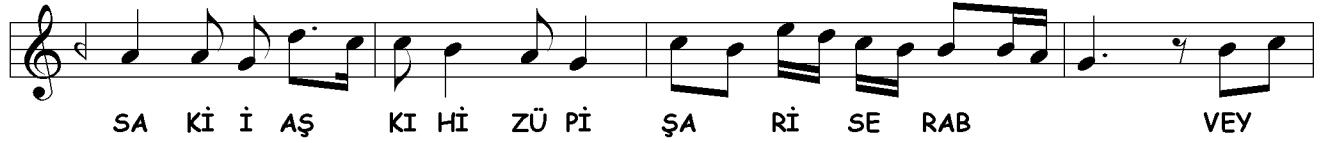
ŞA Hİ DŪ CŪZ BA DE NE HA Hİ MŪ ÇŪ İM RUZ CŪZ

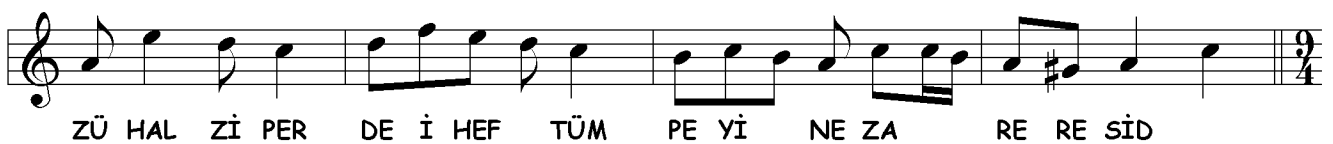
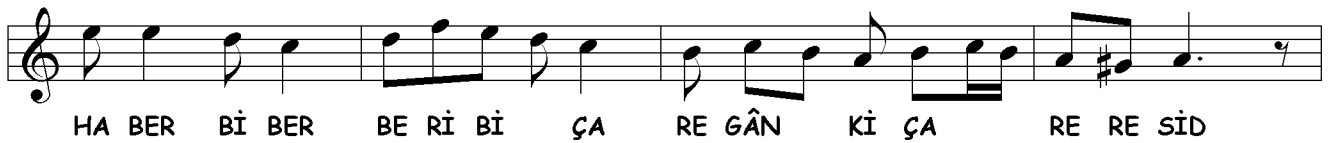
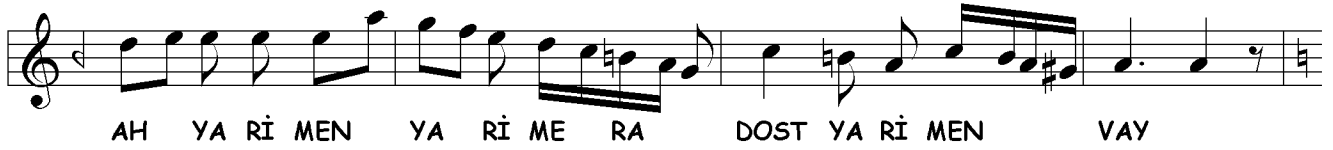


ŞA Hİ Dİ CŪZ BA DE NE HA Hİ MŪ ÇŪ İM RUZ RİN



Dİ MŪ NE DA RİM SE Rİ ZŪH DŪ SA LÂ Hİ EY





DÖRDÜNCÜ SELÂM

Evfer

SUL TA NI ME Nİ

Nİ SUL TA NI ME Nİ

AH EN DER Dİ LÜ CAN

CAN İ MA NI ME Nİ

AH DER MEN Bİ DE Mİ

Mİ MEN ZİN DE ŞE VEM

AH YEK CAN Çİ ŞE VED

VED SAD CA NI ME Nİ

AH İ MA NI ME Nİ

SON PEŞREV

Düyek

Musical notation for SON PEŞREV, Düyek. The piece is written in 2/4 time with a key signature of one sharp (F#). It consists of six staves of music. The first staff begins with a treble clef, a key signature of one sharp, and a 2/4 time signature. The music is a single melodic line with various rhythmic patterns, including eighth and sixteenth notes, and rests. The piece concludes with a double bar line and a final chord.

SON YÜRÜK

Yürük Semâî

Musical notation for SON YÜRÜK, Yürük Semâî. The piece is written in 6/8 time with a key signature of two flats (Bb, Eb). It consists of three staves of music. The first staff begins with a treble clef, a key signature of two flats, and a 6/8 time signature. The music is a single melodic line with various rhythmic patterns, including eighth and sixteenth notes, and rests. The piece concludes with a double bar line and a final chord.