

# BAYÂTÎARABAN PEŞREV

Devr-i Kebîr

Cinuçen Tanrıkorur

The first section, Devr-i Kebîr, is written in 2/8 time and B major. It consists of four staves of music. The first staff begins with a treble clef, a key signature of one sharp (F#), and a 2/8 time signature. The music features a series of eighth and sixteenth notes with various accidentals (sharps, flats, and naturals). The second staff continues the melodic line with similar rhythmic patterns. The third staff shows a change in the melodic contour, with some notes marked with a sharp sign. The fourth staff concludes the section with a triplet of eighth notes and a final note.

İkinci Hane

The second section, İkinci Hane, is written in 2/8 time and B major. It consists of four staves of music. The first staff begins with a treble clef, a key signature of one sharp (F#), and a 2/8 time signature. The music features a series of eighth and sixteenth notes with various accidentals. The second staff continues the melodic line with similar rhythmic patterns. The third staff shows a change in the melodic contour, with some notes marked with a sharp sign. The fourth staff concludes the section with a triplet of eighth notes and a final note.

### Üçüncü Hane



Musical notation for Üçüncü Hane, consisting of four staves. The key signature is one sharp (F#) and the time signature is 2/4. The notation includes various rhythmic patterns, including eighth and sixteenth notes, and rests. A triplet of eighth notes is marked with a bracket and the number 3 in the fourth staff.

### Dördüncü Hane



Musical notation for Dördüncü Hane, consisting of four staves. The key signature is one sharp (F#) and the time signature is 2/4. The notation includes various rhythmic patterns, including eighth and sixteenth notes, and rests. A triplet of eighth notes is marked with a bracket and the number 3 in the first and fourth staves.

# BAYÂTÎARABAN MEVLEVÎ ÂYÎN-I ŞERÎF'Î

## BİRİNCİ SELÂM

Devr-i Revân

Cinuçen Tanrıkorur

EY ÇE RA ĞI A SÜ MA NÜ RAH ME Tİ HAK BER ZE MİN  
HEY Yİ HEY SUL TA NI MEN HEY Yİ HEY HÜN KÂ RI MEN  
NA LE İ MEN GU ŞI DA RÜ DER Dİ HA Lİ MEN BÜ BİN  
HEY Yİ HEY SUL TA NI MEN HEY Yİ HEY HÜN KÂ RI MEN  
BAZ E LEM NEŞ REH RE VAN KÜN ÇA RI CU DER Sİ NE EM  
HEY Yİ HEY SUL TA NI MEN HEY Yİ HEY HÜN KÂ RI MEN  
CU Yİ A BÜ CU Yİ HAM RÜ CU Yİ Şİ RÜ EN GÜ BİN  
HEY Yİ HEY RA NA YI MEN HEY Yİ HEY Zİ BA YI MEN  
İM RU Zİ Çİ RU ZES Tİ Kİ HUR  
Şİ Dİ DÜ TAST HEY Yİ HEY MAH BU Bİ MEN  
İM RU Zİ Zİ RUZ HA Bİ RU



DA RI NA DA RİM DOST DOST NE DA RİM

## İKİNCİ SELÂM

## Evfer

AH AH SUL DER TA MEN Nİ Bİ ME Nİ DE MI  
Nİ MI SUL MEN TA ZİN Nİ DE ME Nİ ŞE VEM  
( Saz ) EN YEK DER CAN Dİ Çİ LÜ CAN ŞE VED  
CAN VED İ SAD MA CA Nİ Nİ ME Nİ ME Nİ  
AH İ MA Nİ ME Nİ

Five staves of musical notation in treble clef, 2/8 time signature, with a key signature of one sharp (F#). The music consists of a series of eighth and sixteenth notes, with some rests and a final double bar line.

## ÜÇÜNCÜ SELÂM

### Devr-i Kebîr

Six staves of musical notation in treble clef, 2/8 time signature, with a key signature of one sharp (F#). The music is accompanied by lyrics in Turkish. The lyrics are: İL Tİ CA Yİ MA BE ŞA HI EV Lİ YAST BE Lİ YA Rİ MEN ZAN Kİ NU REŞ MÜŞ TAK EZ NU Rİ HU DAST BE Lİ YA Rİ MEN EY Kİ DA Rİ Dİ DE İ RU ŞEN BÜ BİN BE Lİ YA Rİ MEN



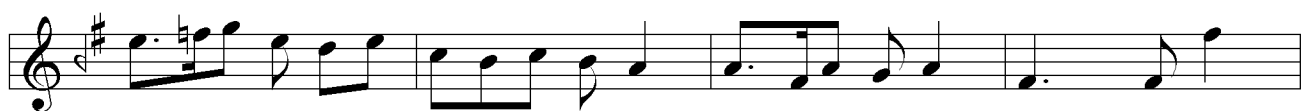
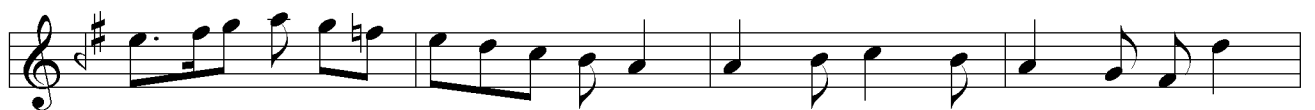
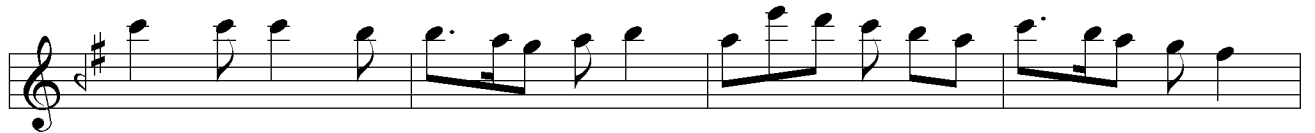
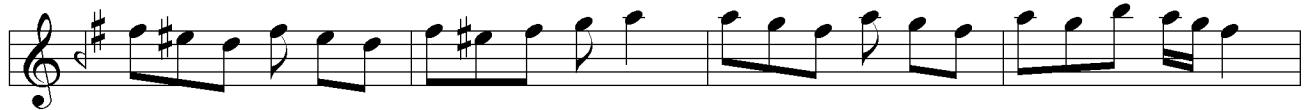
EY Kİ HE ZAR A FE RİN AH BU Nİ CE SUL TAN O LUR  
HER Kİ BU GÜN VE LE DE AH İ NA NU BEN YÜZ SÜ RE

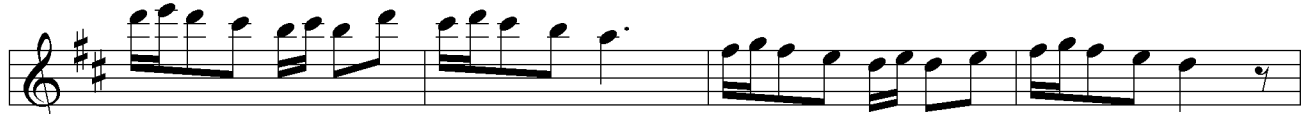


YA Rİ YAR KU LI O LAN Kİ Şİ LER CA NİM HUS RE VÜ HA  
YA Rİ YAR YOK SUL İ SE BAY O LUR CA NİM BAY İ SE SUL



KAN O LUR AH HUS RE VÜ HA KAN O LUR  
TAN O LUR AH BAY İ SE SUL TAN O LUR









EY



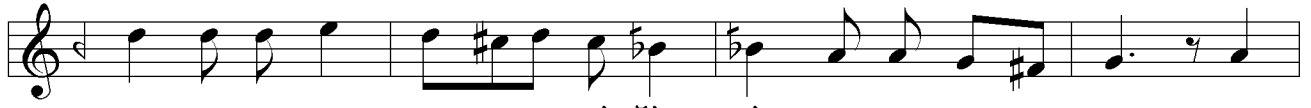
DİL BU YE TER İ Kİ Cİ HAN DE SA NA İZ AN BİR



DİR BİR İ Kİ OL MA YA YOK BİL MIŞ OL İM KÂN HAK



SÖY LE Yİ CEK SEN DE DE NİN OR TA DA NEN VAR A



LEM DE HE MAN BEN DE Dİ ĞİN DİR SA NA NOK SAN SA'Y



LEY LE RI ZA GÖZ LE KO IT LAK İ LE KAY DI A



LEM DE SE MA İ BU YE TER SA Lİ KE İR FAN



## SON PEŞREV

### Düyek

Musical notation for the SON PEŞREV section, Düyek. The notation is written on a single staff in treble clef, key of D major (one sharp), and 2/4 time. It begins with a double bar line and a repeat sign. The melody consists of a series of eighth and sixteenth notes, with a few quarter notes. The piece ends with a double bar line and a repeat sign.

## SON YÜRÜK

### Yürük Semâî

Musical notation for the SON YÜRÜK section, Yürük Semâî. The notation is written on a single staff in treble clef, key of D major (one sharp), and 6/8 time. It begins with a double bar line and a repeat sign. The melody consists of a series of eighth and sixteenth notes, with a few quarter notes. The piece ends with a double bar line and a repeat sign.