

Dilkeşhâverân Şarkı

Şah iken lâhutta ey aşk

- 1 -

Beste: Cemil Altınbilek

Güfte: Ken'ân Rifâi

Ağır Aksak ♩ = 70

Şah i ken lâ
hut ta ey aşk
ser gi nün et tin
be ni ca nim SAZ
SAZ Ser fi râz â zad
i ken dâ im ze bun
et tin be ni
Ce na nim
SAZ Hep me lek ler
ram i di mah kum

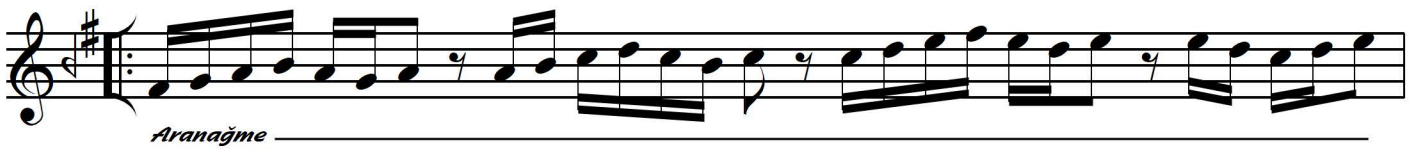
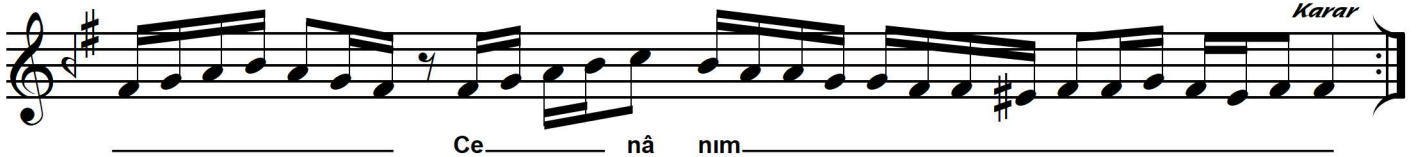
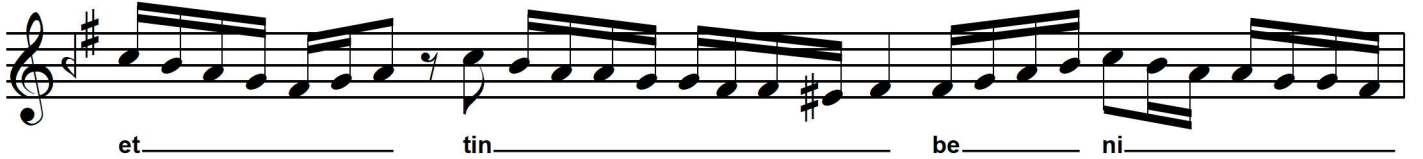
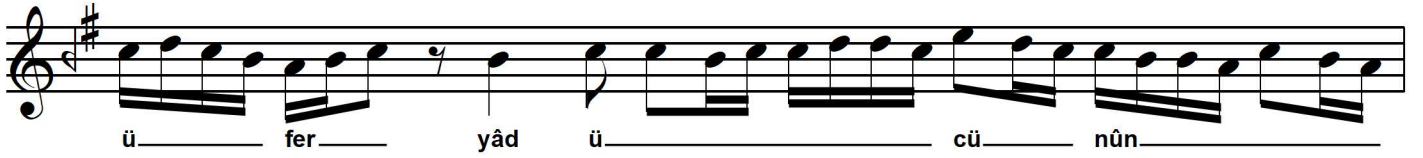
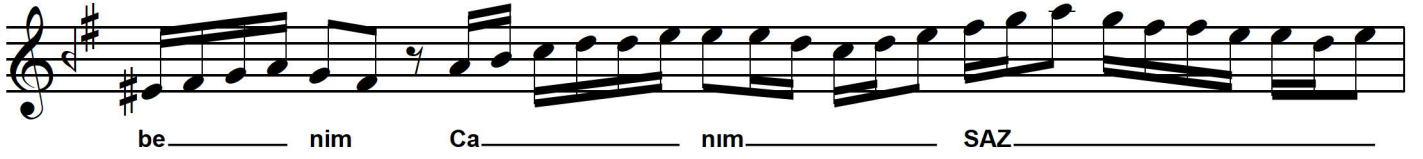
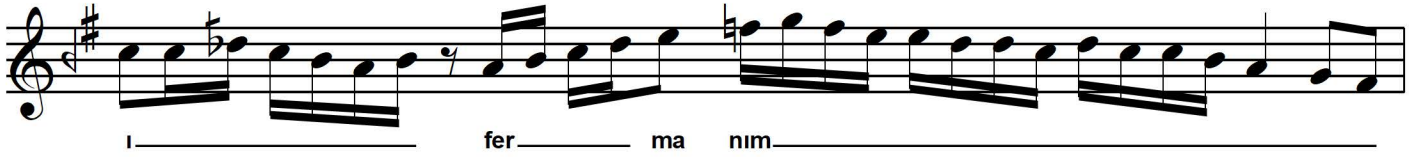
Dilkeşhâverân Şarkı

Şah iken lâhutta ey aşk

- 2 -

Beste: Cemil Altınbilek

Güfte: Ken'ân Rifâi



Lâhut: ilahi âlem
Serginûn: baş aşağı
Serfirâz: başı yüksekte olan
Âzâd: hür, serbest
Zebûn: boyun eğen
Müptelâ: bağımlı
Cünûn: delilik, aşk coşkunuğu

Şah iken lâhutta ey aşk serginûn ettin beni
Serfirâz âzâd iken dâim zebûn ettin beni
Hep melekler râm idi mahkûm-ı fermânım benim
Müptelâ-yı âh ü feryâd ü cünûn ettin beni